

BOTANY RAIL DUPLICATION

COMMUNITY NOTIFICATION | 30 DECEMBER 2020

The Botany Rail Duplication will increase capacity on the Botany Line and wider Metropolitan Freight Network, encouraging a freight transport mode shift from road to rail. The project will duplicate the remaining section of single line track, allowing freight to be moved efficiently from the port to our doorstep, and beyond.

Tenders have been received from three companies to design and build the project, with the contract anticipated to be awarded in mid-2021.

Australian Rail Track Corporation (ARTC) is delivering the project on behalf of the Australian Government.

What are we doing?

The Botany Rail Duplication includes the following key features:

- constructing a new track within the rail corridor for a distance of about three kilometres
- moving some of the existing track sideways to make room for the new track
- constructing new crossovers to allow trains to move between tracks
- bridge works at Mill Stream, Southern Cross Drive, O'Riordan Street and Robey Street
- constructing new embankment and retaining structures.

To help inform the project design, utility investigation work will take in the rail corridor at Botany, south of Southern Cross Drive and adjacent to Eastlake Golf Club on: **Saturday 9 January 2021.**

Vehicles will enter the rail corridor via Banksia Street, Botany.

Vehicles and equipment used will include vacuum trucks, light vehicles, hand tools and survey equipment.

What you can expect

Within the vicinity of the works, people may experience odours, dust and noise from construction equipment and machinery, vehicle movements and essential communication between works.

Within the vicinity of the Banksia Street access, people may experience odours, dust and noise from and vehicle and machinery movements

Every effort will be made to minimise disruption to businesses and residents during these works, however some impacts should be expected.

Construction hours

Work will take place:

8.00am to 6.00pm, Saturday 9 January 2021

ARTC is also carrying out essential maintenance work within the rail corridor on the weekend of:

9 and 10 January 2021.

Separate information will be distributed for these works.

Standard working hours are 7am to 6pm Monday to Friday and 8am to 1pm Saturday. Work may occur outside these hours under certain circumstances, for example for safety reasons or to reduce traffic impacts.



If you need help understanding this information, please contact the Translating and Interpreting Service on 131 450 and ask them to call ARTC on 1300 550 402



Australian Government

BUILDING OUR FUTURE

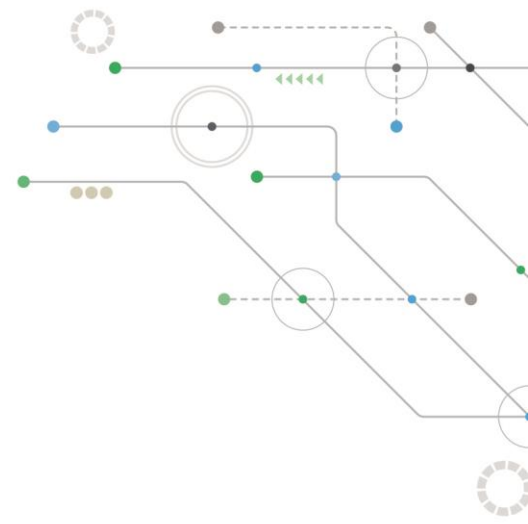
ARTC

You can contact the project team any time for more information, or to provide feedback, via:

P: 1300 550 402

E: enviroline@artc.com.au

W: artc.com.au/projects/



WORK LOCATIONS



*Image is indicative only and not to scale.

The information provided is correct at the time of publishing but is subject to change due to unplanned or unexpected events such as operational changes or heavy rain.