

BOTANY RAIL DUPLICATION NEWS

June 2022



Combined Services Route (CSR) work involving a vacuum truck to help loosen ballast

WELCOME TO YOUR NEWSLETTER!

The Botany Rail Duplication will increase capacity on the Botany Line and wider Metropolitan Freight Network, with one train able to move around the same amount of containers as 54 trucks.

The project will duplicate the remaining 2.9km section of single line track to Port Botany which will allow freight to be moved more efficiently and effectively.

John Holland is currently delivering the project on behalf of Australian Rail Track Corporation (ARTC).

Every three months we will send you the latest newsletter to local residents and businesses, to bring you important project information, photos showing our teams at work and some interesting project facts.

WHAT HAVE WE BEEN DOING?

A key part of the construction so far this year has been construction of the Combined Services Route (CSR) along the project alignment, inside the rail corridor. This work is essential for our upgrade as the CSR delivers the communications and power supply required to operate the rail line.

Installing the CSR involves digging a trench along the rail corridor, installing the CSR conduits (the pipe that the CSR cable goes through) and then covering up the trench. You can see some of this work taking place in the image to the left.

We will be continuing with CSR work throughout 2022. Other ongoing works include service relocation and construction of retaining walls.

BUILDING BRIDGES

A key focus for our project is the construction of new rail bridges at four locations: O’Riordan Street, Robey Street, Southern Cross Drive and Mill Stream. At O’Riordan and Robey Streets, we will be replacing the existing bridges with new double bridges, which will carry the existing rail line and the new second track.



Removal of a 62-tonne bridge girder on O’Riordan Street bridge

In preparation for the bridge construction at O’Riordan Street, we had to remove an unused section of bridge. This included the removal of a major 62-tonne bridge girder (see image above and next page). To do this work, we needed a 650-tonne crane to lift out the girder! O’Riordan Street was closed between Robey Street and Qantas Drive, to allow us to do the work safely.



Piling work commences at the O’Riordan Street bridge

PILING WORK

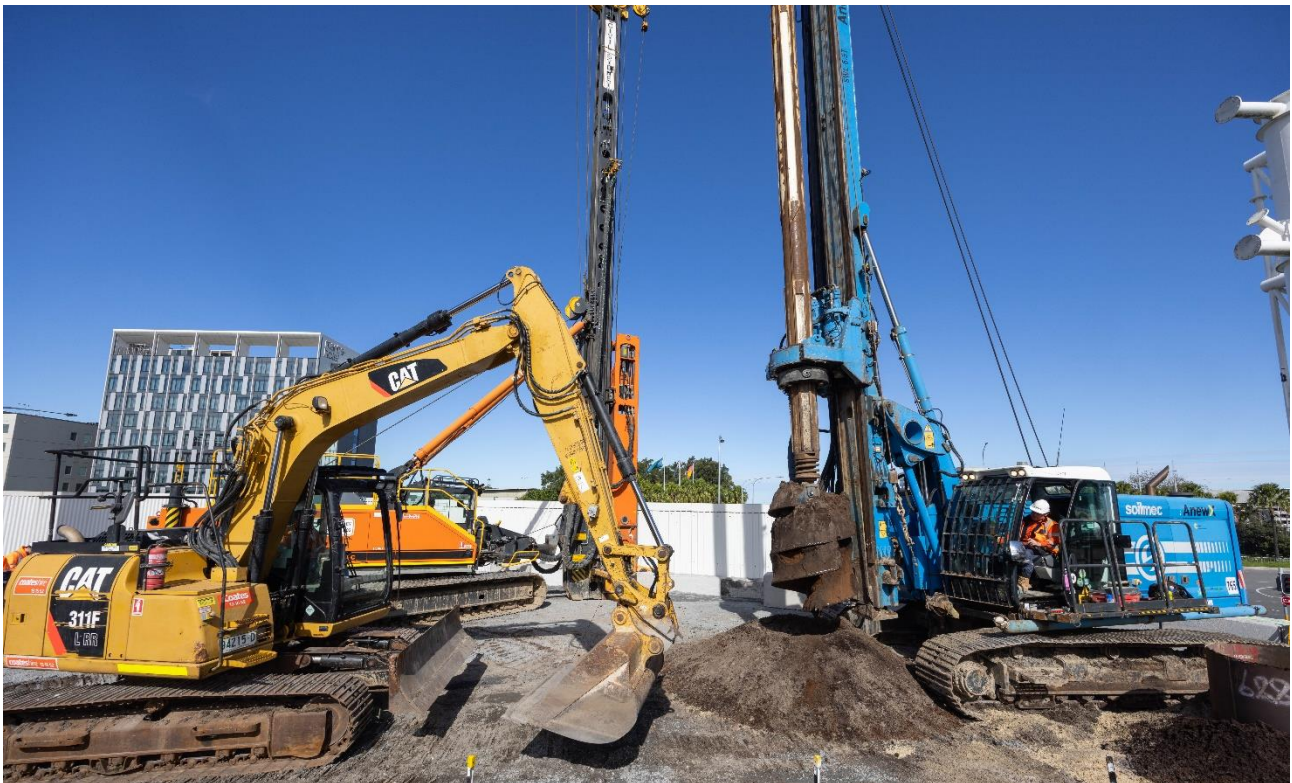
Piling is a foundation support commonly used for concrete structures. It is a technique that sets a column-like structure deep in the ground to support a new bridge.

A piling rig is used to push a large hollow steel pipe into the ground – this is known as the pile casing. A drill rig is then used to drill into the ground and into bed rock to remove the earth inside the casing. From there, a cylindrical steel reinforcement cage is inserted into the hole and concrete is poured in to form the pile. When the piling is finished, the bridge structure above it can be constructed. You can see the piling rig and auger drill rig in the image above and on the next page.

Piling work will continue over the next few months in preparation of the construction of the four new bridges and the installation of 2.9km of new track and signalling infrastructure.



The 650-tonne crane in position at O’Riordan Street during the operation to remove an unused section of bridge.



The auger drill rig in action during piling work at O’Riordan Street. The auger is removing the soil to make room for the reinforcement and concrete pour.

OUR ENVIRONMENT

The Botany Rail Duplication was recently provided with a new software system for noise predictions and noise modelling. This comes at an important time in the project, as it provides us with a high quality methodology and prediction modelling for noise impacts associated with construction work.

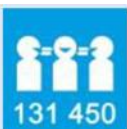
This system will be utilised across the lifespan of the project and provides a better understanding of the impacts of local works, allowing us to plan mitigation if needed. This program will allow the

team to design works with minimal impact on surrounding areas, reducing noise impacts where possible.

The project's planning conditions require there to be a net increase in trees when the project is finished – so we'll be replacing all of the trees and adding more. We will work with Bayside Council and other stakeholders to identify the best locations and species for the replacement trees, which will be planted after major construction is complete.

FEEDBACK

**To provide feedback about the works:
please call our 24-hour Enviroline on 1300 550 402,
email botanyduplication@jhq.com.au, or
mail John Holland, Level 3, 65 Pirrama Road, Pyrmont, NSW, 2009
and quote reference number: BRD15**



Translation and Interpretation Services

Please call 131 450 and ask them to call the project team on 1300 550 402.

Bengali

অনুবাদ এবং দোভাষী পরিষেবা - অনুগ্রহ করে 131 450 নম্বরে টেলিফোন করে প্রজেক্ট টিম-কে 1300 550 402 নম্বরে কল করার জন্য অনুরোধ করুন।

Chinese Simplified (Mandarin)

翻译与传译服务 -- 请致电131 450，然后请他们致电项目团队 1300 550 402。

Chinese Traditional (Cantonese)

翻譯與傳譯服務 -- 請致電131 450，要求聯絡項目團隊，電話 1300 550 402。

Greek

Υπηρεσίες Μετάφρασης και Διερμηνείας - Παρακαλείστε καλέστε το 131 450 και ζητήστε τους να καλέσουν την ομάδα έργου [project team] στο 1300 550 402.

Indonesian

Layanan Penerjemahan dan Juru Bahasa -Silakan menelepon 131 450 dan minta untuk menelepon tim proyek di nomor 1300 550 402.

Spanish

Servicios de Traducción e Interpretación - Llame al 131 450 y pídale que llamen al equipo de proyectos, en el 1300 550 402.

WANT TO KNOW MORE?

p: 1300 550 402

e: botanyduplication@jhq.com.au

w: botanyduplication.com.au



Register for project updates by hovering your phone over the code.



Australian Government

BUILDING OUR FUTURE

ARTC