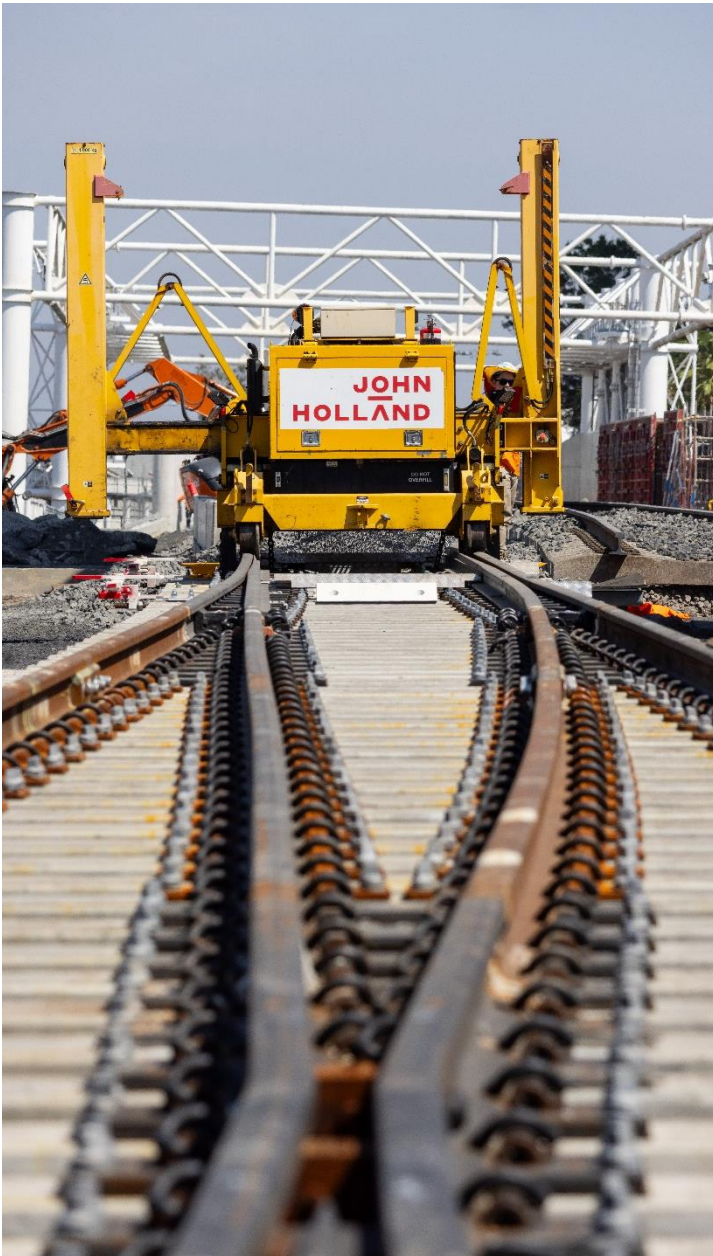


BOTANY RAIL DUPLICATION NEWS

December 2023



A specialist 'Pem-Lem machine' picks up track during the installation of a rail crossover near General Holmes Drive

WHAT HAVE WE BEEN UP TO?

The project has made great progress throughout 2023 and we now have all of the duplicated track installed! We'll need to do some more adjustments to the track and signalling in early 2024 to make the new tracks ready for freight trains to use.

We've got to this point following some fantastic efforts by the project team throughout 2023.

This included intensive work during a recent planned weekend shutdown when the project continued working over 1.3km of track, including the installation of a new crossover, turnouts and significant commissioning of new rail signalling, which will allow trains to move bi-directionally along and between tracks – increasing operational flexibility and reducing delays to train movements.

The project also removed the last temporary steel trusses at the Southern Cross Drive bridge. The new duplicated concrete bridge was constructed on top of four steel trusses. These were individually removed over eight-night shifts, which required a full road closure of Southern Cross Drive in both directions.

At the other end of the project, a new rail double-track concrete bridge was constructed at O'Riordan Street during a five-day planned rail shutdown. The bridge works involved installing 20 concrete planks to form the bridge deck, each weighing up to 31 tonnes. The new bridge is 45 metres long and 12 metres wide.

WHATS NEXT?

The project is already in preparation mode for the final planned track closure that's scheduled for mid-January 2024 for the final track and commissioning work and taking out redundant track, signals, cables and location cases over three kilometres of track.

In the meantime, have a very safe and happy Christmas and New Year!

RECENT WORK



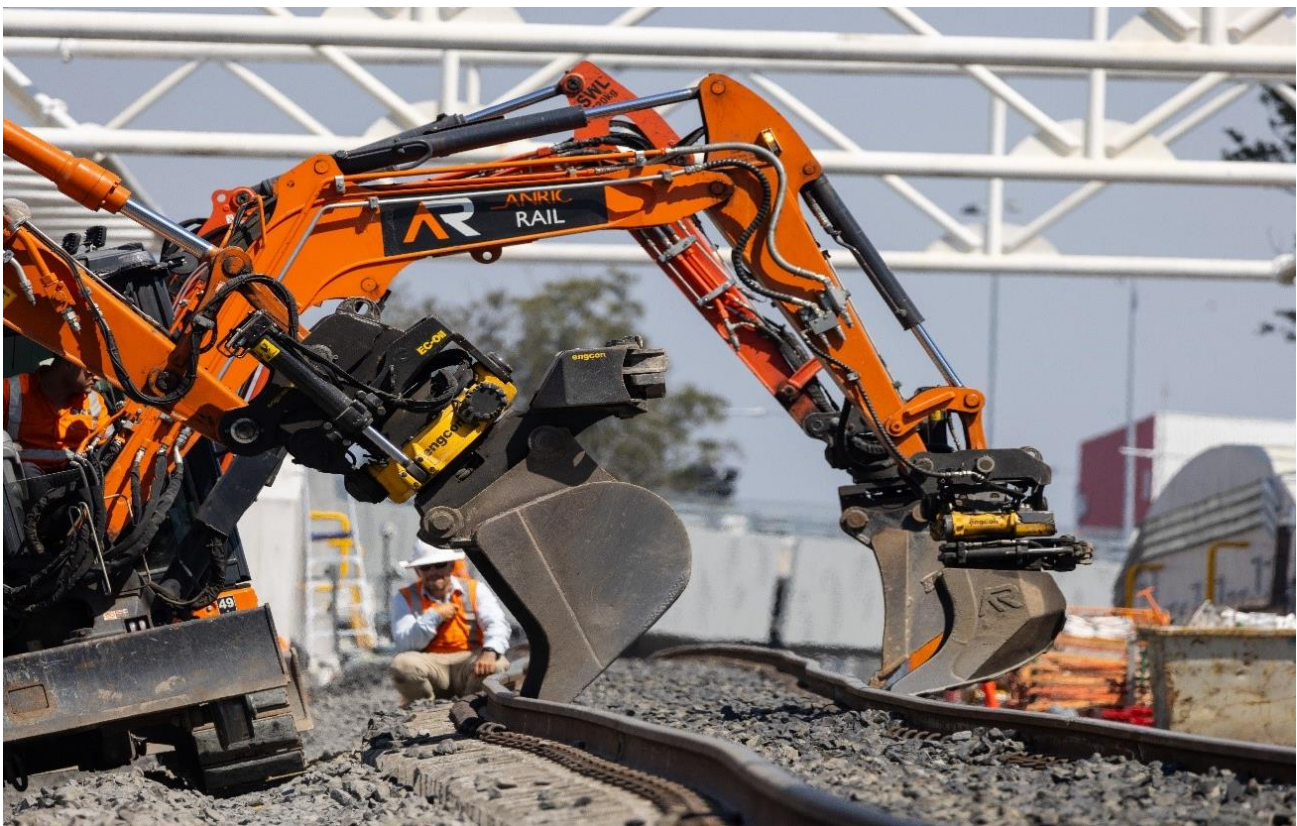
SPMT (self-propelled modular transporter) lowering and removing the existing O’Riordan Street bridge during the five-day planned rail shutdown, before the new bridge was constructed



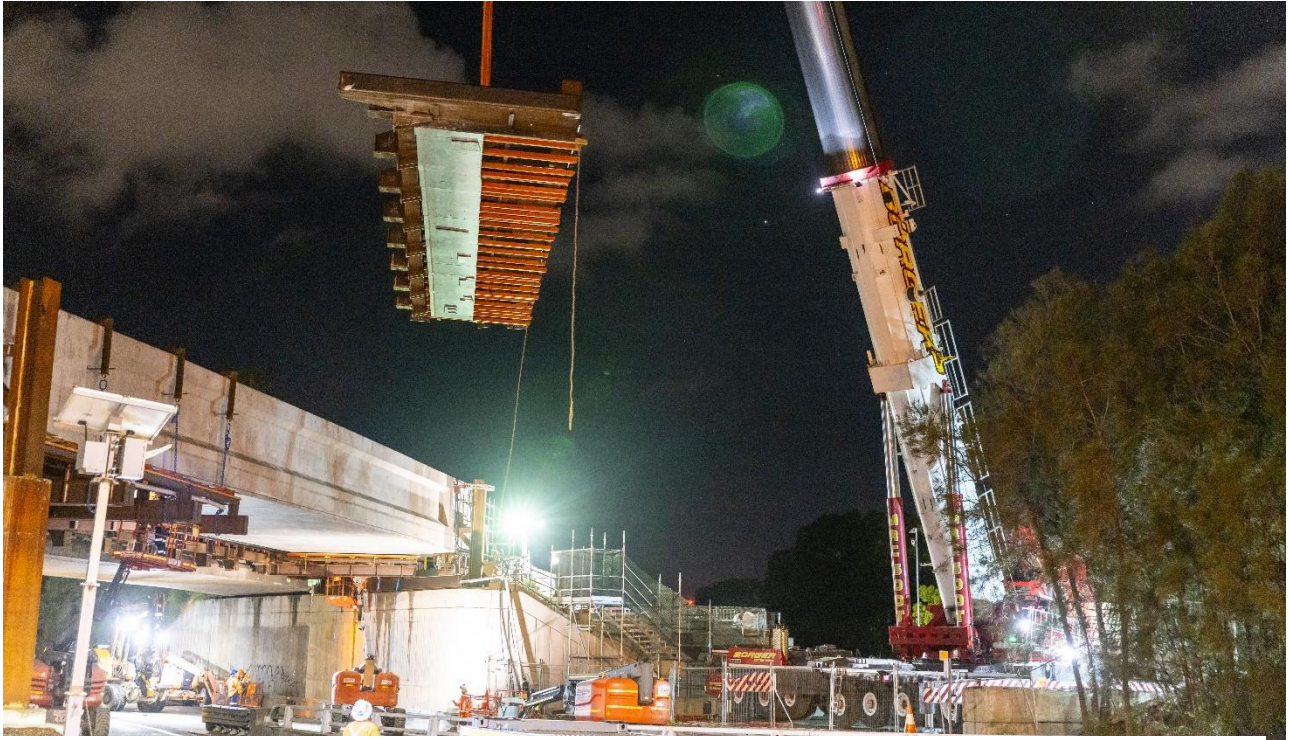
Crane lifting in new bridge planks at O’Riordan Street bridge during the shutdown



Installing new rail track at Robey Street bridge



Excavators aligning newly laid rail track near Baxter Road, Mascot



Lifting and removing a temporary steel truss used to construct the new Southern Cross Drive bridge

To provide feedback about the works:
please call our 24-hour Enviroline on 1300 550 402,
email botanyduplication@jhq.com.au, or
mail John Holland, Level 3, 65 Pirrama Road, Pyrmont, NSW, 2009
and quote reference number: BRD46



131 450

Translation and Interpretation Services

Please call 131 450 and ask them to call the project team on 1300 550 402.

Bengali

অনুবাদ এবং দোভাষী পরিষেবা - অনুগ্রহ করে 131 450 নম্বরে (টেলিফোন করে প্রজেক্ট টিম-কে 1300 550 402 নম্বরে কল করার জন্য অনুরোধ করুন।

Chinese Simplified (Mandarin)

翻译与传译服务 — 请致电131 450, 然后请他们致电项目团队 1300 550 402。

Chinese Traditional (Cantonese)

翻譯與傳譯服務 - 請致電131 450, 要求聯絡項目團隊, 電話 1300 550 402。

Greek

Υπηρεσίες Μετάφρασης και Διερμηνείας - Παρακαλείσθε καλέστε το 131 450 και ζητήστε τους να καλέσουν την ομάδα έργου [project team] στο 1300 550 402.

Indonesian

Layanan Penerjemahan dan Juru Bahasa -Silakan menelepon 131 450 dan minta untuk menelepon tim proyek di nomor 1300 550 402.

Spanish

Servicios de Traducción e Interpretación - Llame al 131 450 y pídale que llamen al equipo de proyectos, en el 1300 550 402.

**JOHN
HOLLAND**

WANT TO KNOW MORE?

p: 1300 550 402

e: botanyduplication@jhq.com.au

w: botanyduplication.com.au



Register for project updates by hovering
your phone over the code.



Australian Government

ARTC