

CABRAMATTA LOOP PROJECT

4 January 2022

CLP_05

The Cabramatta Loop Project will increase rail freight capacity on the Southern Sydney Freight Line by allowing freight trains travelling in either direction to pass each other.

Together with the Botany Rail Duplication, it will build capacity to meet predicted growth in demand for freight to be carried on rail between Port Botany and metropolitan freight intermodal terminals. Fulton Hogan is designing and constructing the Cabramatta Loop Project for ARTC.

In 2022, our contractor Fulton Hogan will begin the major construction works for the Cabramatta Loop Project. For more information visit cabramattaloop.com.au

WHAT ARE WE DOING?

From **Monday 10 January 2022**, the following works activities will start in Broomfield Street and within the rail corridor between Cabramatta and Warwick Farm Stations.

▪ Broomfield Street to become one-way

From **early January 2022**, Broomfield Street will temporarily become a one-way street, to allow work to take place. Traffic will only be allowed to travel northbound along Broomfield Street (towards Cabramatta) and parking will be temporarily restricted (see map on next page) as crews progressively complete work on the residential side of the street.

This work includes underground services upgrades and relocations, storm water drainage improvements, earthworks, pavement construction and concrete works (cutting and pouring). These works may involve pedestrian and cycleway detours or diversions.

In late April, crews will switch to working on the railway corridor side of Broomfield Street, and traffic will change to one-way moving south, towards Sussex Street. **Two-way traffic will be reinstated when this section of work is complete.**

▪ Services work along Broomfield Street

From February 2022, we need to adjust sewer manholes, relocate water mains, and strengthen the protection around existing utility services. This work will include working across residential driveways. Before we start, we will consult and coordinate with affected residents to ensure access to properties is maintained.

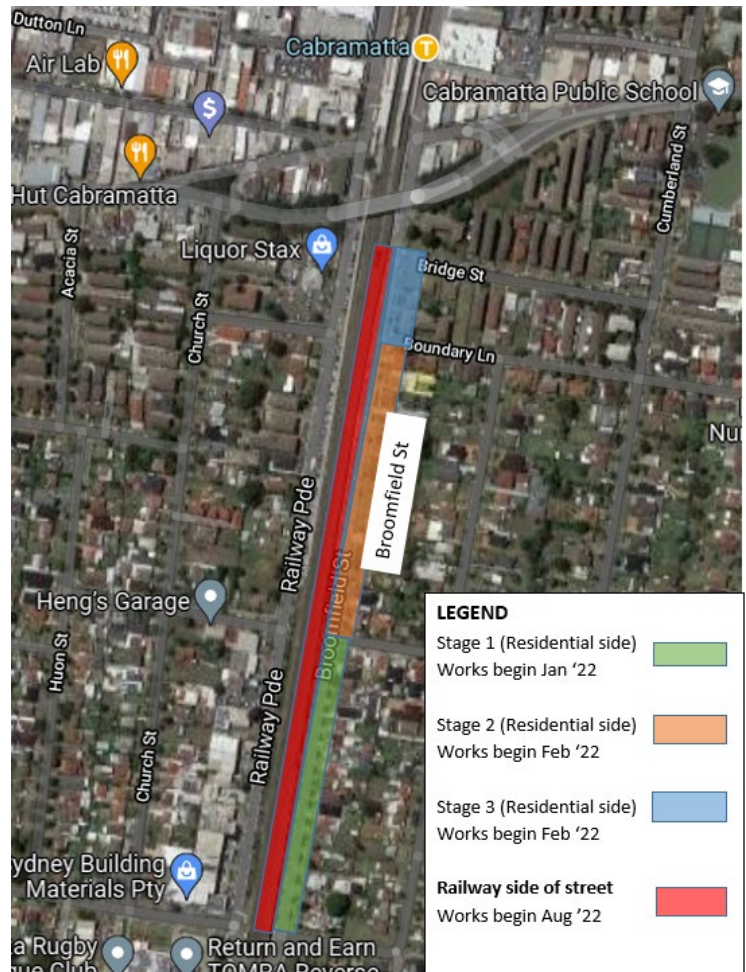
▪ Parking impacts along Broomfield Street during these works

To minimise impacts to parking availability, we will be staging these works (see map on next page). When work is complete, parking areas will be reinstated to the new design. To assist commuters, we'll build 10 additional parking bays in Railway Parade near Cabramatta station.

▪ Railway corridor works between Cabramatta and Warwick Farm

From 10 January 2022 we will be carrying out signalling works and design investigations. This will include excavation and construction of signalling infrastructure. We will access the rail corridor through access gates along Broomfield Street and on Station Street, Warwick Farm. You may notice some heavy vehicle and equipment movement.

BROOMFIELD STREET WORKS MAP



BROOMFIELD STREET INDICATIVE TIMELINE OF WORKS

All timelines are weather permitting and may be subject to change.

- **From February, and continuing throughout 2022:** Utility works will be ongoing along Broomfield Street from Sussex Street to Bridge Street. We will need to connect temporary water services during this time. We will contact affected residents and businesses before we start these works.
- **From early January - Stage 1 residential side:** trenching, relocation of drainage and services, and street restoration between Sussex Street and Junction Street. This work is expected to take four months.
- **From February - Stage 2 residential side:** trenching, relocation of drainage and services, and street restoration between Junction Street and Boundary Lane. This work is expected to take six months.
- **From February - Stage 3 residential side:** trenching, relocation of drainage and services, and street restoration between Boundary Lane and Bridge Street. This work is expected to take nine months.
- **From August 2022 to September 2023 - Stages 1, 2 and 3 railway side:** relocation of noise wall and construction (including trenching and street restoration) between Sussex Street and Bridge Street.

HOW MIGHT THIS WORK AFFECT YOU?

The majority of work will take place during standard construction hours, which are: **Monday to Friday, 7am to 6pm, and 8am to 1pm Saturdays**. We will advise nearby residents and businesses as early as possible if there is to be any work outside standard hours.

Every effort will be made to keep noisy works to a minimum and reduce impacts to the community wherever possible. Work dates are scheduled around current government rules and restrictions for Greater Sydney and may be subject to change. The project is committed to operating in a COVID-safe way.

Please keep to the speed limits and follow road signs or traffic controllers' directions. Information about traffic changes and works will be available on the project website www.cabramattaloop.com.au. You can also call 132 701, visit livetraffic.com or download the Live Traffic NSW App for the latest traffic updates.

RAIL CORRIDOR WEEKEND POSSESSION WORK

We have limited opportunity throughout the year to access the rail corridor. Between **10.30pm Friday, 28 January and 2am Monday, 31 January 2022 there will be a planned railway track closure**.

Activities during this closure will include signalling work and design investigations. We will also be removing the remaining trees on Broomfield Street within the rail corridor, along with some trees in Jacquie Osmond Reserve which are close to the rail line.

We will work to minimise disruption to you during this time, however, there will be some construction related noise and vibration. During night works, we may also need to use additional temporary lighting to enable our crews to work safely.

Work activities will occur along the rail corridor between Cabramatta and Warwick Farm Stations. There will be traffic control in place on Broomfield Street, near the Cabravale Leisure Centre, to allow construction equipment to safely enter and exit the site.

The work will require **temporary** closure of:

- Approximately 10 car parking spaces in the Railway Parade carpark, opposite Cabramatta Plaza (see map on next page)
- Approximately 20 car parking spaces in Broomfield Street (opposite the Cabravale Leisure Centre) to allow equipment and trucks to safely enter and exit the rail corridor
- Approximately 30 car parking spaces in the commuter car park near Warwick Street, Warwick Farm.

Parking spaces will be reinstated on Monday morning, 31 January 2022.

CONTACT US

ARTC and our contractor, Fulton Hogan, are committed to working with the community as a vital part of our planning and consultation work, and we value your feedback.

To ensure we protect public health and safety during the evolving COVID situation, we have changed the way we consult with the community. Please be assured we will continue to respond to any questions or concerns you may have about the project.

You can contact our team by phone on **1300 550 402**, email cabramattaloop@fultonhogan.com.au, or mail **PO BOX 6099, Alexandria NSW**.



Translation and Interpretation Services

Please call **131 450** and ask them to call the project team on **1300 550 402**.

Vietnamese

Dịch vụ Thông Phiên Dịch – vui lòng gọi số 131 450 và nhờ họ gọi cho toán phụ trách dự án qua số 1300 550 402.

Chinese Simplified

翻译与传译服务——请致电131 450，并请他们接通项目团队电话1300 550 402。

Arabic

خدمة الترجمة التحريرية والشفهية - اتصل على الرقم 131 450 واطلب منهم الاتصال بفريق المشروع على الرقم 1300 550 402.

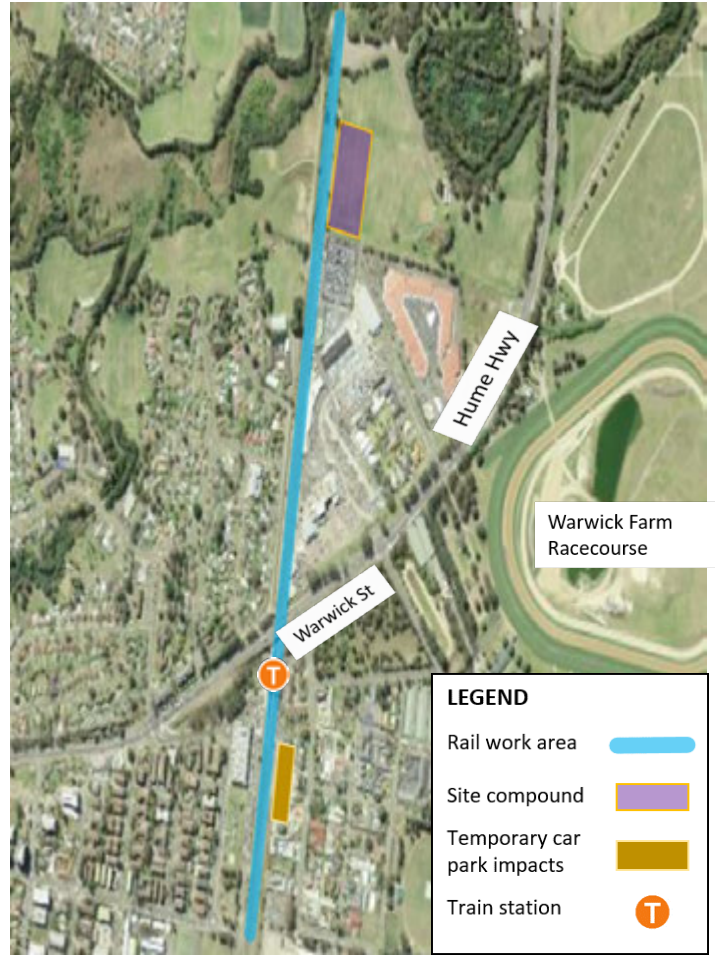
Khmer

សេវាកម្មបកប្រែភាសា - សូមទូរស័ព្ទទៅលេខ 131 450 ហើយសុំឲ្យគេទូរស័ព្ទទៅក្រុមការងារគម្រោងតាមលេខ 1300 550 402។

Chinese Traditional

翻譯與傳譯服務——請致電131 450，然後要求他們接通項目工作組電話1300 550 402。

WEEKEND POSSESSION WORK LOCATIONS



WANT TO KNOW MORE?

p: 1300 550 402

e: cabramattaloop@fultonhogan.com.au

w: cabramattaloop.com.au



Register for project updates by hovering your phone over the code (visit the Contact Us page).