

CABRAMATTA LOOP PROJECT

7 May 2022

CLP_10

The Cabramatta Loop Project will increase rail freight capacity on the Southern Sydney Freight Line by allowing freight trains travelling in either direction to pass each other. Together with the Botany Rail Duplication, it will build capacity to meet predicted growth in demand for freight to be carried on rail between Port Botany and metropolitan freight terminals. Fulton Hogan is designing and constructing the Cabramatta Loop Project for ARTC.

RAIL CORRIDOR WEEKEND TRACK WORK

We have limited opportunities throughout the year to access the rail corridor. On the weekend of **14-15 May 2022**, between **10.30pm Friday** and **2am Monday**, there is a pre-planned railway track closure.

Activities include signalling work, drainage installation and design investigations, as well as piling pad construction on the Cabramatta Creek rail bridge. All construction work will happen in the rail corridor.

We will work to minimise disruption to you during this time, however high levels of construction related noise and vibration are likely to be experienced. Every effort will be made to keep noise levels to a minimum and works will be monitored to make sure noise levels are being managed effectively.

Equipment will be turned off when not in use and where possible noise blankets will be set up around work sites. Vehicles will use non-tonal reversing alarms. During night works, we may also need to use additional, temporary lighting to enable our crews to work safely.

From 9 May, we will be delivering equipment and machinery to the sites outside of our standard work hours, to be used on the weekend. To allow the team to work safely during this time, the following car parking spaces outside of the rail corridor will be **temporarily** closed:

- Approximately 15 kerb side parking spaces on West Street, Carramar (see Map 1 overleaf)
- Approximately 20 car parking spaces in Broomfield Street (opposite the Cabravale Leisure Centre) to allow equipment and trucks to safely access the rail corridor (see Map 2 overleaf)
- Approximately 30 car parking spaces in the commuter car park near Warwick Street, Warwick Farm (see Map 3 overleaf).

These parking spaces will be reinstated on Monday morning, 16 May 2022.

What equipment will we be using?

Excavators, vacuum trucks, roller, front end loader, power hand tools, surveying equipment, geotechnical investigation rigs, construction vehicles, lighting towers, work trucks and traffic control signs and barriers.



Translation and Interpretation Services

Please call **131 450** and ask them to call the project team on **1300 550 402**.

Vietnamese

Dịch vụ Thông Phiên Dịch – vui lòng gọi số 131 450 và nhờ họ gọi cho toán phụ trách dự án qua số 1300 550 402.

Chinese Simplified

翻译与传译服务——请致电131 450，并请他们接通项目团队电话1300 550 402。

Arabic

خدمة الترجمة التحريرية والشفوية - اتصل على الرقم 131 450 واطلب منهم الاتصال بفرق المشروع على الرقم 1300 550 402.

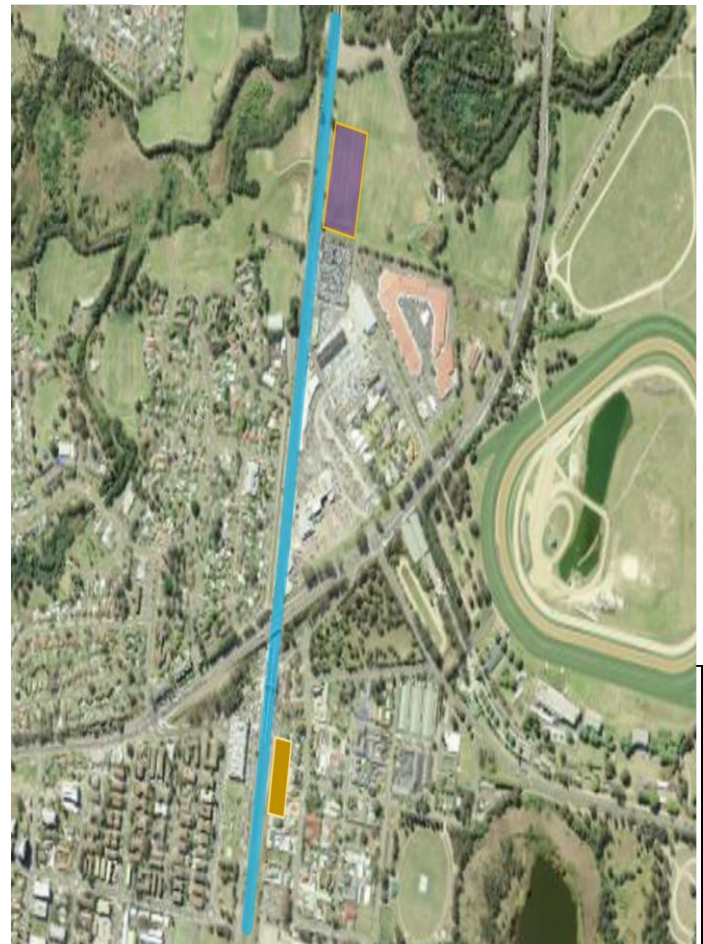
Khmer

សេវាកម្មបកប្រែភាសា - សូមទូរស័ព្ទទៅលេខ 131 450 ហើយសុំឱ្យគេទូរស័ព្ទទៅគ្រូបកប្រែភាសាសម្រាប់គម្រោងលេខ 1300 550 402។

Chinese Traditional

翻譯與傳譯服務——請致電131 450，然後要求他們接通項目工作組電話1300 550 402。

WEEKEND TRACK WORK LOCATIONS



WANT TO KNOW MORE?

p: 1300 550 402

e: cabramattaloop@fultonhogan.com.au

w: cabramattaloop.com.au



Register for project updates by hovering your phone over the code (visit the Contact Us page).



Australian Government

BUILDING OUR FUTURE

ARTC