

CABRAMATTA LOOP PROJECT

November 2022

CLP_21

The Cabramatta Loop Project will increase rail freight capacity on the Southern Sydney Freight Line by constructing a new 1.65km section of track, allowing freight trains travelling in either direction to pass each other. Fulton Hogan is designing and constructing the Cabramatta Loop Project for ARTC.

CONSTRUCTION WORK IN NOVEMBER/DECEMBER

SUSSEX STREET RAIL BRIDGE

We will be setting up cranes for lifting and installing planks on the new Sussex Street rail bridge in late November. In order to carry this work out safely, we will temporarily close a small section of the Sussex Street underpass for approximately one week in late November/early December, weather permitting (see **map 5** on page 3 for details of the detour). Dates for the closure will be displayed on electronic message signs in the area, before this work begins.

Traffic control will be operating in the area, please pay close attention to road signage and follow the directions of traffic controllers.

CABRAMATTA CREEK RAIL BRIDGE

As mentioned in our August notification, this is a reminder that there will be temporary disruptions on the shared path at Cabramatta Creek for short periods during the day from **October to December**, to allow safe set up of heavy machinery for work on the new Cabramatta Creek rail bridge.

We may also need to temporarily close the footpath for **48 hours** in mid to late **December**. Signs with details of work location and timing will be placed around the project area before this work begins (see **map 6** on page 3 for details).

PEDESTRIAN ACCESS WARWICK FARM TRAIN STATION

Signalling work at Warwick Farm station is continuing and we will again be temporarily closing the eastern pedestrian staircase to Warwick Farm station for up to three weeks in early to mid-November, weather permitting, to allow the team to work safely on the construction of the signals structure. Pedestrian access to the eastern train platforms will be available via the western staircase. Signs will direct commuters to the detour pedestrian route during this work.

RAIL CORRIDOR WEEKEND TRACK WORK

We have limited opportunities throughout the year when we can access the rail corridor. From **11 to 14 November 2022**, between **10.00pm Friday** and **2am Monday**, there is a pre-planned railway track closure for the Cabramatta Loop Project.

We will be working at various locations on the rail network in the area. Construction activities will include signalling work, excavating, piling, crane mobilisation, earthworks, drainage installation, concrete breaking and hammering and concrete pouring. Diagrams showing the locations of the work can be found on **pages 2 and 3** of this letter.

EQUIPMENT

Equipment used will include excavators, cranes, vacuum trucks, rollers, front end loader, power hand tools, surveying equipment, geotechnical investigation rigs, construction vehicles, lighting towers, work trucks and traffic control signs and barriers.

PARKING CHANGES

From **Friday 11 November**, we will **temporarily** close a number of car parking spaces until the morning of **Monday 14 November**, to allow the safe set up of machinery outside the rail corridor. Parking spaces will be closed at the following locations, as required:

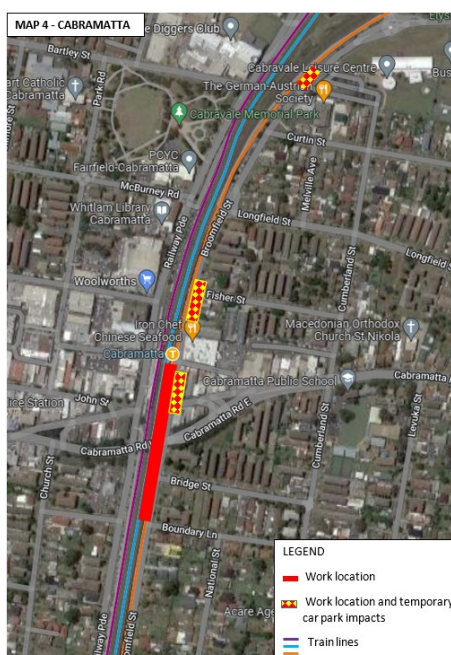
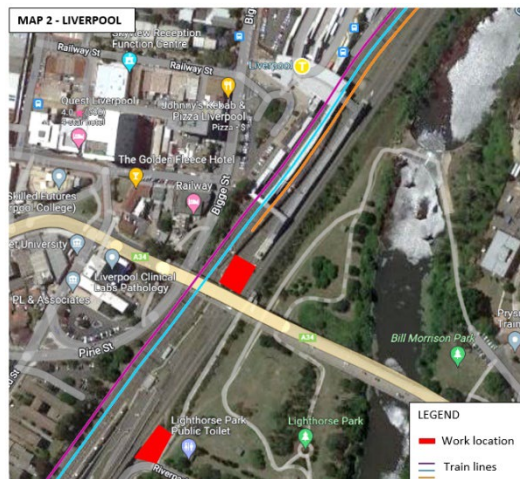
- **Warwick Farm station** – around 30 car parking spaces in the commuter car park near Warwick Street, Warwick Farm (see **Map 3** on page 2).
- **Cabramatta East Station** angle parking – around 10 car parking spaces in Broomfield Street (opposite Cabravale Leisure Centre) to allow equipment and trucks to safely access the rail corridor (see **Map 4** on page 2). Traffic control will be operating a stop-go set up at this location.
- **Cabramatta East Station** angle parking – around 15 car parking spaces (see **Map 4** on page 2).

HOW MIGHT THIS WORK AFFECT YOU?

This work may be noisy and disruptive, however every effort will be made to keep noisy works to a minimum and reduce impacts to the community wherever possible. Some of the measures we will use include turning off equipment when not in use, setting up noise blankets around work sites where possible and using non-tonal ('white noise') reversing alarms on vehicles. Works will be monitored to make sure noise levels are being managed effectively. You can find out more information about noise and vibration in the fact sheet on our website cabramattaloop.com.au.

We may also use additional temporary lighting during night works, to allow our crews to work safely.

MAPS SHOWING WORK LOCATIONS





Due to the frequent wet weather we are experiencing, the project area is subject to flooding and the timing of these works may change. Please contact the project team if you have any concerns. We appreciate your continued patience and understanding while we carry out this important work.

For information on passenger train impacts, please contact Transport for NSW on 131 500 or visit <https://transportnsw.info>.

To provide feedback about these works, working times, durations or respite measures, **please call our 24-hour Enviroline on 1300 550 402, email cabramattaloop@fultonhogan.com.au or mail PO BOX 6099, Alexandria NSW.**

131 450 Translation and Interpretation Services

Please call **131 450** and ask them to call the project team on **1300 550 402**.

Vietnamese
 Dịch vụ Thông Phiên Dịch – vui lòng gọi số 131 450 và nhờ họ gọi cho toàn phụ trách dự án qua số 1300 550 402.

Chinese Simplified
 翻译与传译服务——请致电131 450，并请他们接通项目团队电话1300 550 402。

Arabic
 خدمة الترجمة التحريرية والشفهية - اتصل على الرقم 131 450 واطلب منهم الاتصال بتريق المشروع على الرقم 1300 550 402.

Khmer
 សេវាកម្មបកប្រែភាសា - សូមទូរស័ព្ទទៅលេខ 131 450 ហើយសុំឱ្យពួកគេទូរស័ព្ទទៅគ្រួសារនិងសម្របសម្រួលលេខ 1300 550 402។

Chinese Traditional
 翻譯與傳譯服務——請致電131 450，然後要求他們接通項目工作組電話1300 550 402。

WANT TO KNOW MORE?

p: 1300 550 402
e: cabramattaloop@fultonhogan.com.au
w: cabramattaloop.com.au



Register for project updates by hovering your phone over the code (visit the Contact Us page).



Australian Government

BUILDING OUR FUTURE

ARTC