

# NARRABRI TO TURRAWAN LINE UPGRADE

8 May 2023

## WHAT ARE WE DOING?

The Narrabri to Turrawan Line Upgrade (N2TLU) involves the upgrade of 35km of track between the Hunter Valley Coal Network and Inland Rail.

The project will be delivered from Narrabri Coal Junction at Whitehaven Coal, south of Turrawan, to the future interface with Inland Rail at Narrabri North.

Works include the replacement of existing steel and timber sleepers with heavy duty concrete sleepers, replacement of the existing rail with upgraded rail, and earthworks.

## OUT OF HOURS WORK IN THE RAIL CORRIDOR

We are planning to work outside standard construction hours within the existing rail corridor near Narrabri Station, Doyle Street, Fitzroy Street and Spencer Street, Narrabri. A map of the work area is shown on page 3 of this notification (Map 1).

Information about dates, locations and work activities is listed in the table below. Works will occur between **8am** and **6pm**, weather permitting.

LOCATION	DATE	WORK
<b>Narrabri Station, Doyle Street, Fitzroy Street and Spencer Street</b>	<ul style="list-style-type: none"><li>Saturday 13 May to Sunday 14 May 2023</li><li>Saturday 20 May to Sunday 21 May 2023</li><li>Saturday 27 May 2023</li></ul>	Site establishment, surveying, material deliveries, rail sleeper upgrades, site inspections, demobilisation

## EQUIPMENT

The equipment to be used will include front end loaders, excavators, rollers, traffic control equipment, delivery trucks, semi-trailers, delivery floats, small motor tools and construction vehicles.

## TRAFFIC CHANGES

If required, traffic control will be put in place to minimise any impacts to the community.

## WORK DURING STANDARD HOURS

We are also working during standard construction hours from **Monday 17 April 2023** for approximately three months. Work hours are **7am to 6pm Monday to Friday** and **8am to 1pm Saturday**, weather permitting. Work activities will take place at various locations within and near the rail corridor at Narrabri and Turrawan and will include: site mobilisation, delivery of materials, surveying, drainage works, resleepering and rerailing.

**RAIL CORRIDOR MIDWEEK TRACK WORK**

We have limited opportunities throughout the year when we can safely access the rail track and some work has to take place during pre-planned track closures. We are planning to work during and outside standard construction hours within the existing rail corridor, at various locations in Narrabri and Turrawan. Maps of the work areas are shown on page 4 of this notification (Maps 2 and 3).

Information about dates, locations and work activities is listed in the table below. Works will be continuous from **6am Tuesday to 9pm Thursday**, weather permitting.

LOCATION	DATE	WORK
Fraser Street Level Crossing	Tuesday 23 May to Thursday 25 May 2023	<ul style="list-style-type: none"> <li>• Earthworks, replacing ballast (the rock layer underneath the tracks), replacing sleepers, rerailing, and associated works required to complete the upgrade of the rail track</li> <li>• Upgrade works at Fraser Street Level Crossing.</li> </ul>
Rail corridor near Narrabri Station, Doyle Street, Fitzroy Street and Spencer Street		<ul style="list-style-type: none"> <li>• Earthworks, replacing ballast, replacing sleepers, rerailing, and associated works required to complete the upgrade of the rail track</li> </ul>
Rail corridor near Whitehaven Coal, Turrawan		<ul style="list-style-type: none"> <li>• Track work including removing ballast, replacing sleepers, and associated works required to complete the upgrade of the rail track</li> </ul>

**EQUIPMENT**

The equipment to be used will include excavators, dozers and graders, trucks, power hand tools, dozers and graders, scrapers, watercarts, vibratory rollers, semi-trailers, construction vehicles, rail saws, welding equipment, traffic control signage and barriers, earth moving machines, lighting towers and a tamper.

**TRAFFIC CHANGES**

The Fraser Street Level Crossing will be closed intermittently for short periods, for safety reasons, while work takes place. Local residents will be assisted to their property by the project team, where required. In the event of an emergency, access will be provided through the crossing. Impacted residents will be consulted before works start.

Traffic control will also be in place at Kurrajong Creek Road Level Crossing, Old Turrawan Road Level Crossing, Old Cemetery and Fitzroy Street Level Crossing while work takes place in these areas. Road users may need to wait for short periods, for safety reasons. Please pay close attention to road signage and follow the directions of traffic controllers.

**HOW COULD THIS WORK AFFECT YOU?**

This work may be noisy and disruptive, however every effort will be made to keep noisy works to a minimum and reduce impacts to the community wherever possible. Some of the measures we may use include turning off equipment when not in use, setting up noise blankets around work sites and using non-tonal ('white noise') reversing alarms on vehicles.

Lighting will be used during night works to help the project team to work safely. Lighting will be positioned to minimise or avoid light spill outside the work site.

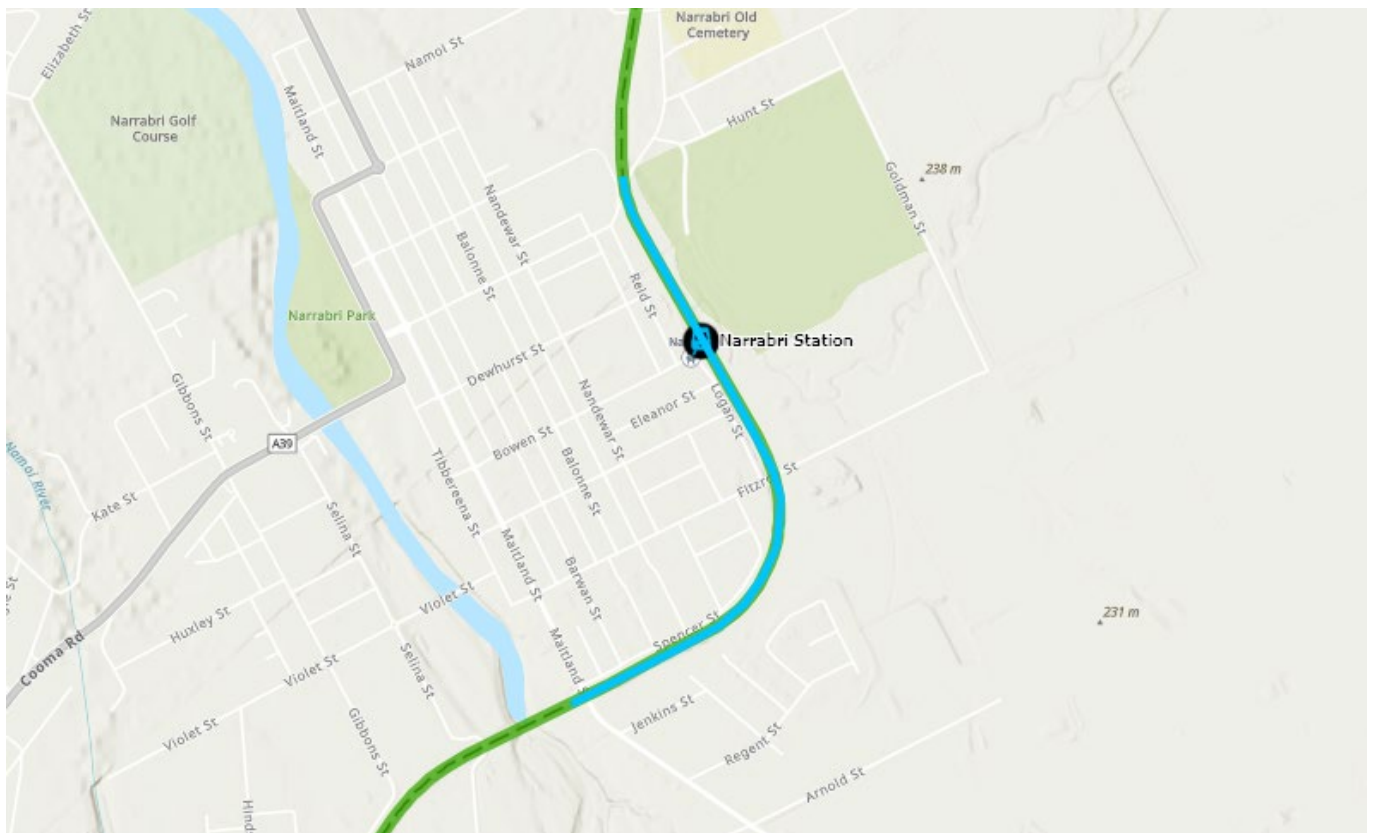
## CONTACT US



To provide feedback about these works, working times, durations or respite measures, please call our 24-hour Enviroline on 1300 550 402 (mention 'Narrabri to Turrawan') or by emailing [nswprojects@artc.com.au](mailto:nswprojects@artc.com.au).

You can find out more information about the project and upcoming works by visiting our website [artc.com.au/n2tupgrade](http://artc.com.au/n2tupgrade).

## WORK LOCATIONS

Map 1: Out of hours work in the rail corridor near Narrabri Station, Doyle Street, Fitzroy Street and Spencer Street, Narrabri

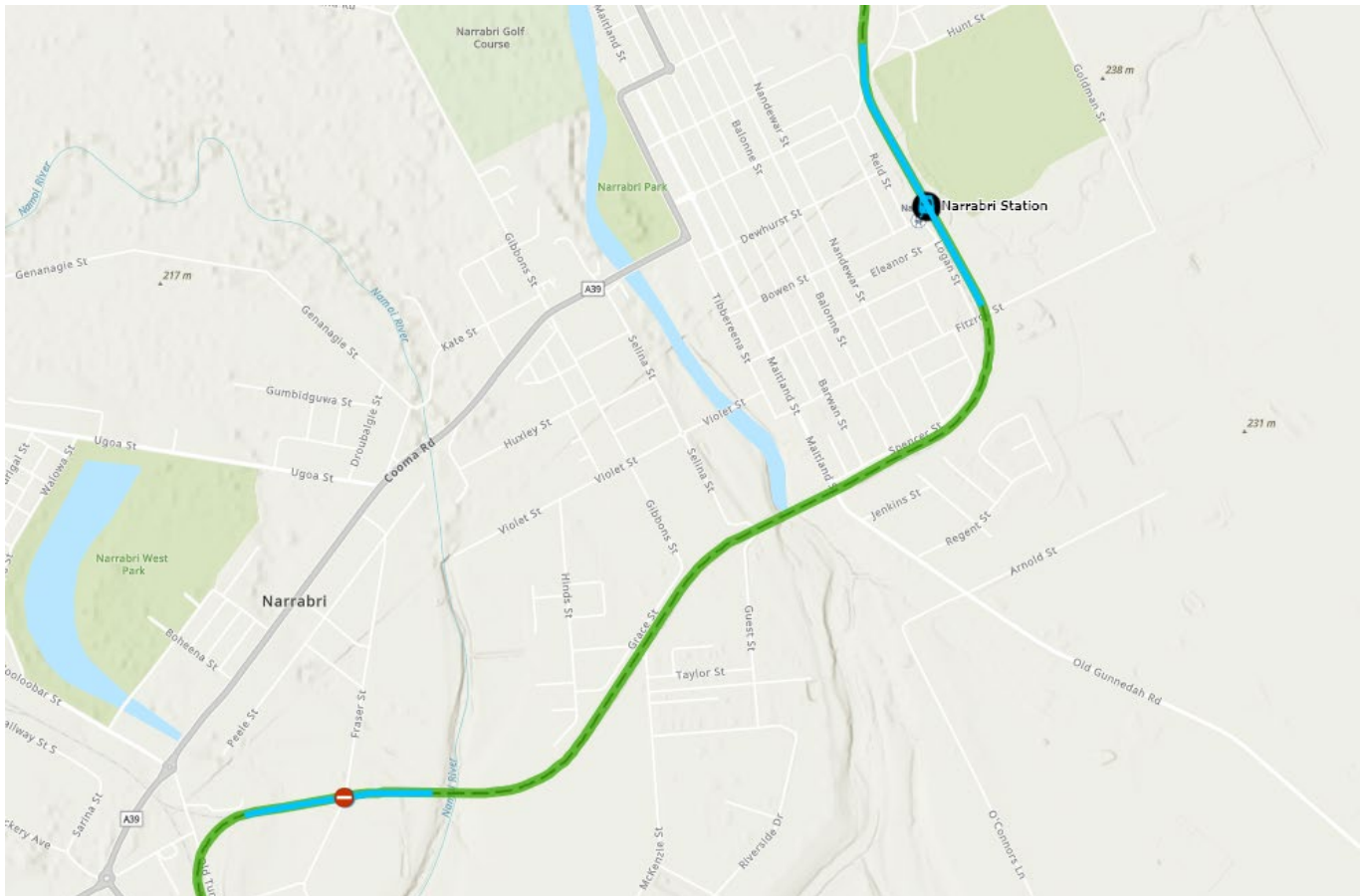


Track alignment:	
Work locations:	

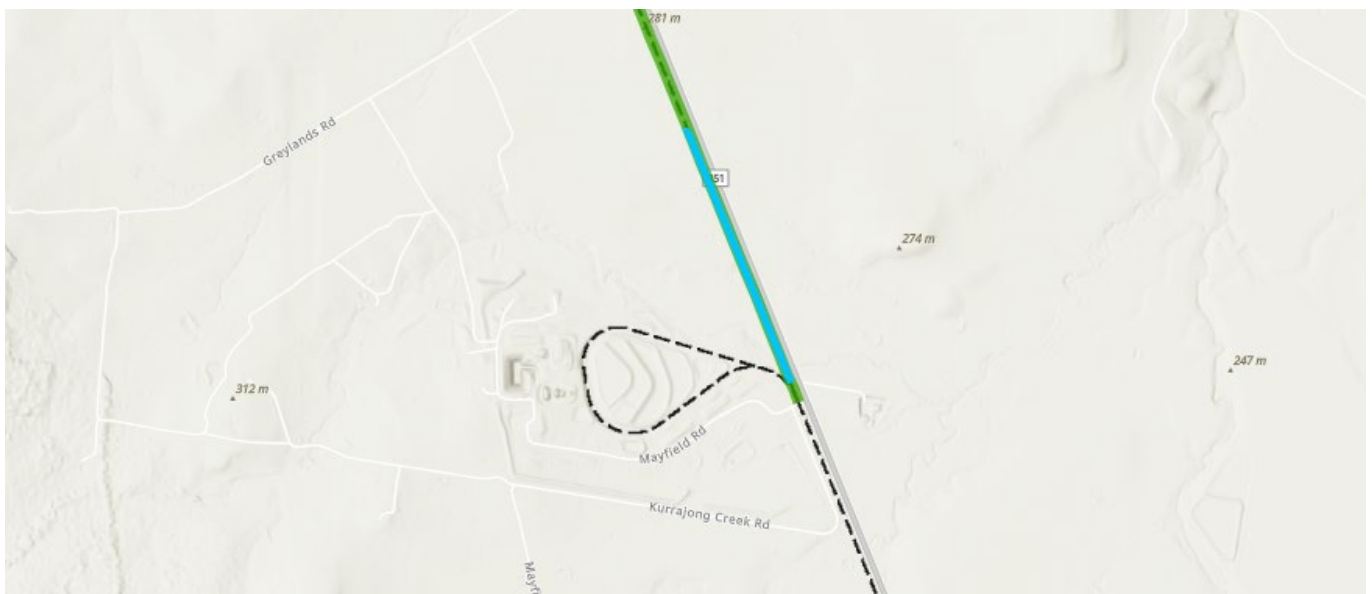


If you require the services of an interpreter, please contact the Translating and Interpreting Service on 131 450 and ask them to call the project team on 1300 550 402. The interpreter will then assist you with translation.

Map 2: Midweek track work at Fraser Street Level Crossing and in the rail corridor near Narrabri Station, Doyle Street, Fitzroy Street and Spencer Street, Narrabri



Map 3: Midweek track work in the rail corridor near Whitehaven Coal, Turrawan



**WANT TO KNOW MORE?**



p: Enviroline 1300 550 402  
e: [nswprojects@artc.com.au](mailto:nswprojects@artc.com.au)  
w: [artc.com.au/n2tupgrade](http://artc.com.au/n2tupgrade)

