

NARRABRI TO TURRAWAN LINE UPGRADE

2 June 2023

WHAT ARE WE DOING?

The Narrabri to Turrawan Line Upgrade (N2TLU) involves the upgrade of 35km of track between the Hunter Valley Coal Network and Inland Rail.

The project will be delivered from Narrabri Coal Junction at Whitehaven Coal, south of Turrawan, to the future interface with Inland Rail at Narrabri North.

Works include the replacement of existing steel and timber sleepers with heavy duty concrete sleepers, replacement of the existing rail with upgraded rail, and earthworks.

OUT OF HOURS WORK IN THE RAIL CORRIDOR

We have limited opportunities throughout the year when we can safely access the rail track and some work has to take place during pre-planned track closures. We are planning to work during and outside standard construction hours within the existing rail corridor near Old Turrawan Road, Narrabri. Standard construction hours are 7am to 6pm Monday to Friday and 8am to 1pm Saturday.

Information about dates, locations and work activities is listed in the table below. Works will occur between **6am** and **6pm**, weather permitting. A map of the work area is shown on page 2 of this notification.

LOCATION	DATE	WORK
Rail Corridor near Old Turrawan Road, Narrabri	<ul style="list-style-type: none">Saturday 10 June to Sunday 11 June, 2023	Track work including removing ballast (the rock layer underneath the tracks), replacing sleepers, and associated works required to complete the upgrade of the rail track

EQUIPMENT

The equipment to be used will include front end loaders, excavators, rollers, traffic control equipment, delivery trucks, semi-trailers, delivery floats, small motor tools and construction vehicles.

HOW COULD THIS WORK AFFECT YOU?

This work may be noisy and disruptive, however every effort will be made to keep noisy works to a minimum and reduce impacts to the community wherever possible. Some of the measures we may use include turning off equipment when not in use and using non-tonal ('white noise') reversing alarms on vehicles.

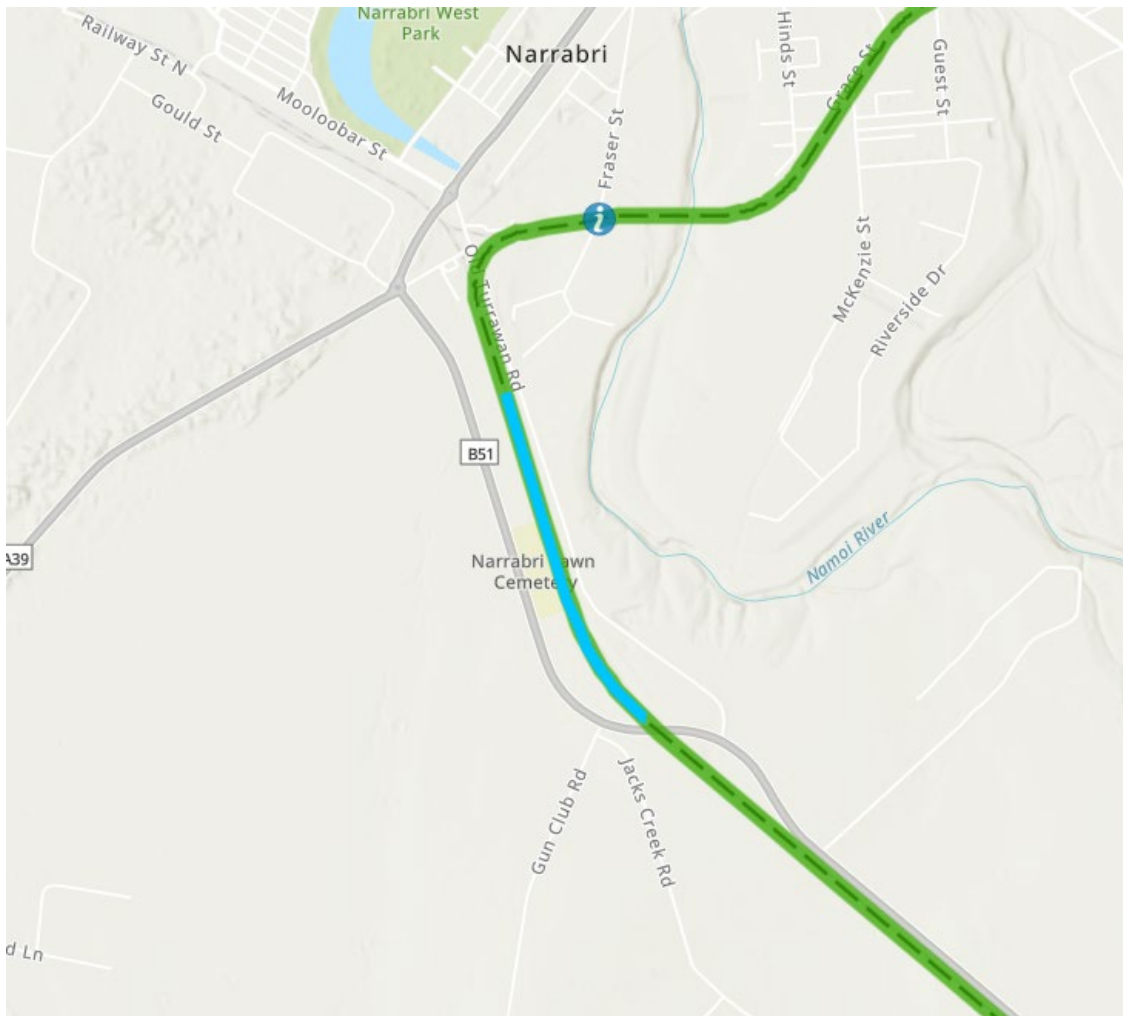
CONTACT US

To provide feedback about these works, working times, durations or respite measures, **please call our 24-hour Enviroline on 1300 550 402 (mention 'Narrabri to Turrawan')** or by emailing nswprojects@artc.com.au.

You can find out more information about the project and upcoming works by visiting our website artc.com.au/n2tupgrade.

WORK LOCATIONS

Map 1: Work Activities in the rail corridor near Old Turrawan Road, Narrabri



Track alignment:



Work locations:



If you require the services of an interpreter, please contact the Translating and Interpreting Service on 131 450 and ask them to call the project team on 1300 550 402. The interpreter will then assist you with translation.

WANT TO KNOW MORE?



p: Enviroline 1300 550 402
e: nswprojects@artc.com.au
w: artc.com.au/n2tupgrade