

# NARRABRI TO TURRAWAN LINE UPGRADE

17 July 2023

## WHAT ARE WE DOING?

The Narrabri to Turrawan Line Upgrade (N2TLU) involves the upgrade of 35km of track between the Hunter Valley Coal Network and Inland Rail.

The project will be delivered from Narrabri Coal Junction at Whitehaven Coal, south of Turrawan, to the future interface with Inland Rail at Narrabri North.

Works include the replacement of existing steel and timber sleepers with heavy duty concrete sleepers, replacement of the existing rail with upgraded rail, and earthworks.

## OUT OF HOURS WORK IN THE RAIL CORRIDOR

We are planning to work outside standard construction hours within the existing rail corridor between Narrabri Coal and Turrawan. A map of the work area is shown on page 3 of this notification (Map 1).

Information about dates, locations and work activities is listed in the table below. Works will occur between **6am** and **6pm**, weather permitting.

LOCATION	DATES	WORK
Rail Corridor between Narrabri Coal and Turrawan	<ul style="list-style-type: none"><li>Saturday 12 August to Sunday 13 August 2023</li><li>Saturday 26 August to Sunday 27 August 2023</li></ul>	Track work including removing ballast (the rock layer underneath the tracks), replacing sleepers, and associated works required to complete the upgrade of the rail track

## EQUIPMENT

The equipment to be used will include front end loaders, excavators, rollers, traffic control equipment, delivery trucks, semi-trailers, delivery floats, small motor tools and construction vehicles.

## TRAFFIC CHANGES

If required, traffic control will be put in place to minimise any impacts to the community.

## WORK DURING STANDARD HOURS

We are also working during standard construction hours from **Monday 17 April 2023** for approximately six months. Work hours are **7am to 6pm Monday to Friday** and **8am to 1pm Saturday**, weather permitting. Work activities will take place at various locations within and near the rail corridor at Narrabri and Turrawan and will include: site mobilisation, delivery of materials, surveying, drainage works, resleeping and rerailing.

**RAIL CORRIDOR WEEKEND TRACK WORK**

We have limited opportunities throughout the year when we can safely access the rail track and some work has to take place during pre-planned track closures. We are planning to work during and outside standard construction hours within the existing rail corridor, at various locations in Narrabri and Turrawan. Maps of the work areas are shown on page 4 of this notification (Maps 2 and 3).

Information about dates, locations and work activities is listed in the table below. Works will be continuous from **6pm Friday to 9am Tuesday**, weather permitting.

LOCATION	DATE	WORK
Rail corridor near Narrabri Station, Reid Street and Logan Street, Narrabri	Friday 4 August to Tuesday 8 August 2023	<ul style="list-style-type: none"> <li>• Earthworks, replacing ballast (the rock layer underneath the tracks), replacing sleepers, rerailing, and associated works required to complete the upgrade of the rail track</li> <li>• <b>Closure of Fitzroy Street level crossing</b></li> </ul>
Rail corridor near Spencer Street, Narrabri		<ul style="list-style-type: none"> <li>• Track work including removing ballast, replacing sleepers, and associated works required to complete the upgrade of the rail track</li> </ul>
Rail corridor near Turrawan Road, Turrawan		<ul style="list-style-type: none"> <li>• Earthworks, replacing ballast, replacing sleepers, rerailing, and associated works required to complete the upgrade of the rail track</li> </ul>

**EQUIPMENT**

The equipment to be used will include excavators, dozers and graders, trucks, power hand tools, dozers and graders, scrapers, watercarts, vibratory rollers, semi-trailers, construction vehicles, rail saws, welding equipment, traffic control signage and barriers, earth moving machines, lighting towers and a tamper.

**TRAFFIC CHANGES**

**The Fitzroy Street Street Level Crossing will be closed for the duration of the works, for safety reasons** (subject to approvals). A detour will be in place for local residents via Fitzroy Street, Goldman Street, Stoney Creek Road, Old Cemetery Road, Reid Street and Logan Street. In the event of an emergency, access will be provided through the crossing. Impacted residents will be consulted before works start. A map of the detour can be found on page 4 of this notification (Map 2).

**HOW COULD THIS WORK AFFECT YOU?**

This work may be noisy and disruptive, however every effort will be made to keep noisy works to a minimum and reduce impacts to the community wherever possible. Some of the measures we may use include turning off equipment when not in use, setting up noise blankets around work sites and using non-tonal ('white noise') reversing alarms on vehicles.

Lighting will be used during night works to help the project team to work safely. Lighting will be positioned to minimise or avoid light spill outside the work site.

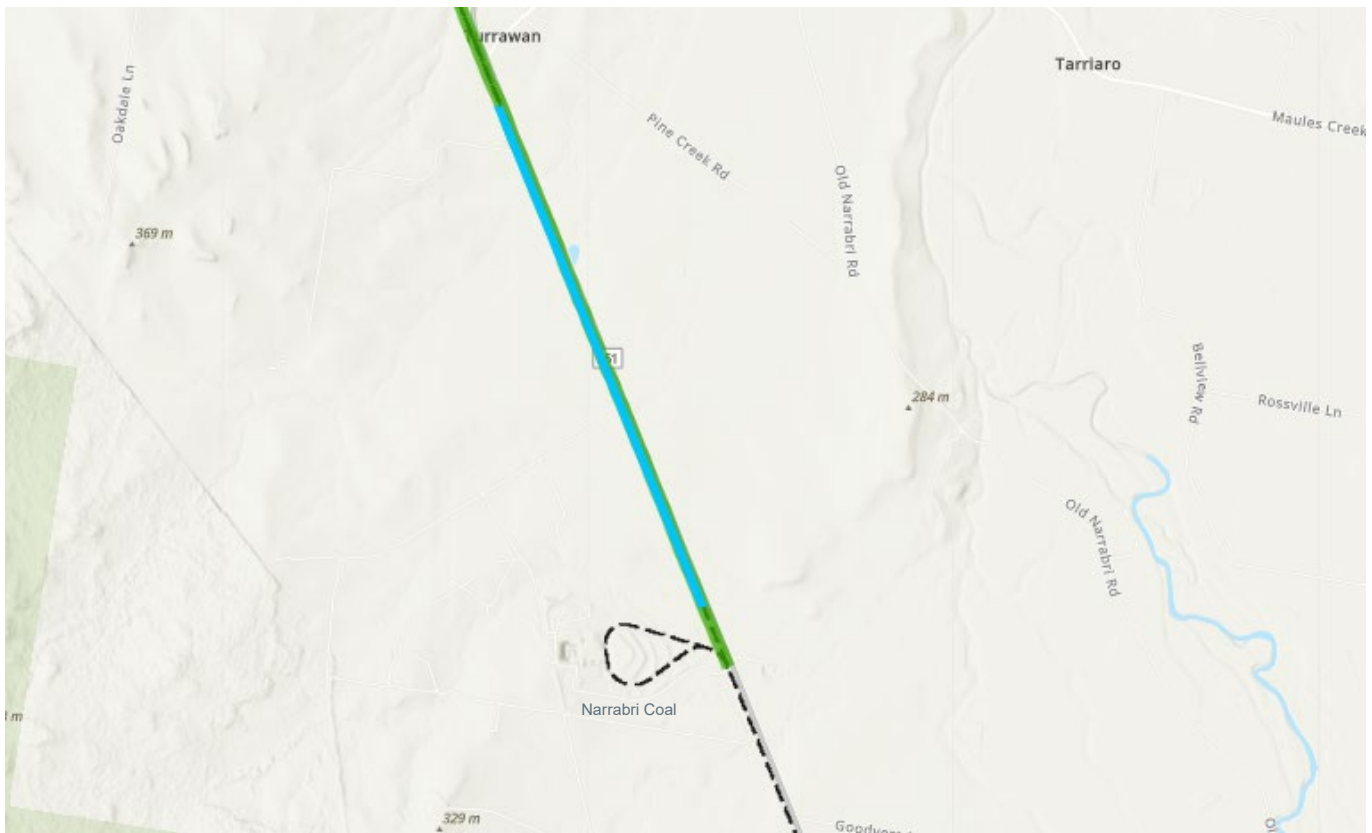
## CONTACT US




To provide feedback about these works, working times, durations or respite measures, **please call our 24-hour Enviroline on 1300 550 402 (mention 'Narrabri to Turrawan')** or by emailing [nswprojects@artc.com.au](mailto:nswprojects@artc.com.au).

You can find out more information about the project and upcoming works by visiting our website [artc.com.au/n2tupgrade](http://artc.com.au/n2tupgrade).

## WORK LOCATIONS

Map 1: Out of hours work in the rail corridor Narrabri Coal and Turrawan

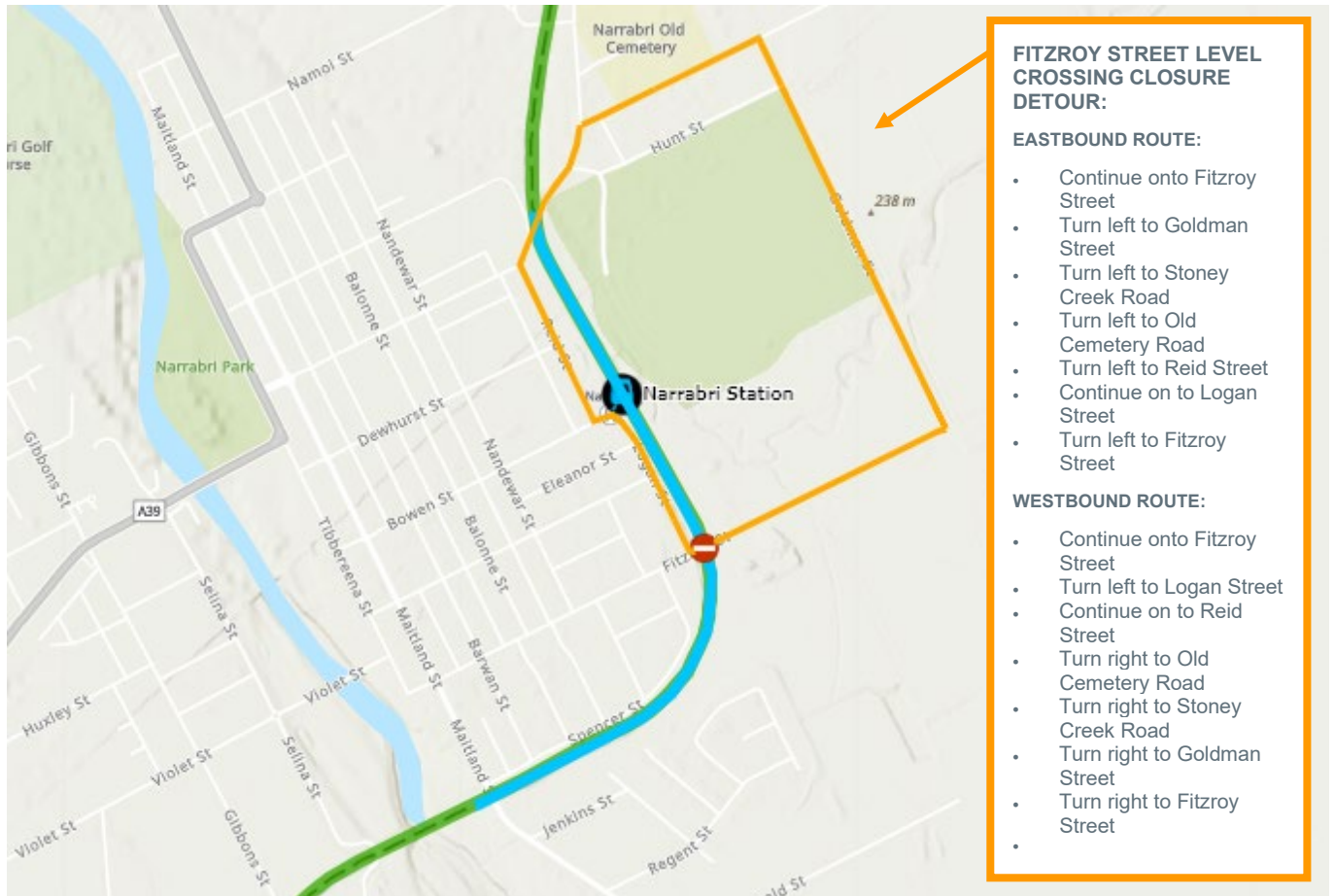


Track alignment:	
Work locations:	
Vehicle detour:	

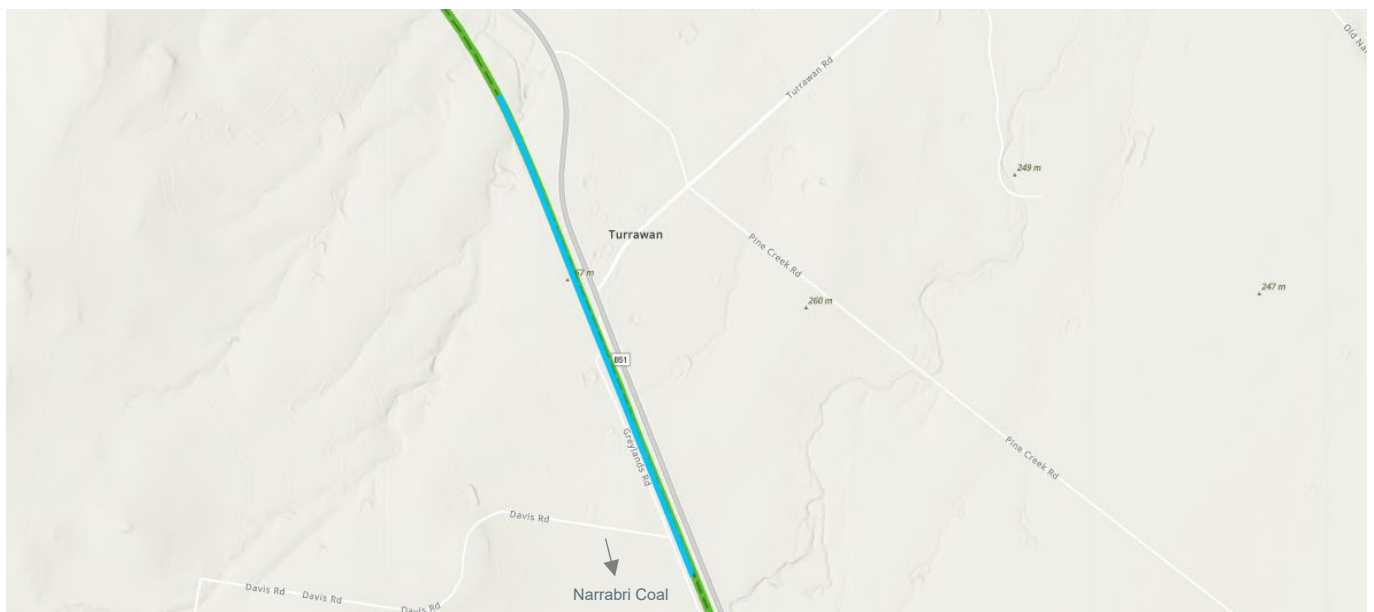


If you require the services of an interpreter, please contact the Translating and Interpreting Service on 131 450 and ask them to call the project team on 1300 550 402. The interpreter will then assist you with translation.

**Map 2: Weekend track work in rail corridor near Narrabri Station, Reid Street, Logan Street and Spencer Street, Narrabri and Fitzroy Street level crossing detour**



**Map 3: Weekend track work in rail corridor near Turrawan Road, Turrawan**



**WANT TO KNOW MORE?**



p: Enviroline 1300 550 402  
 e: [nswprojects@artc.com.au](mailto:nswprojects@artc.com.au)  
 w: [artc.com.au/n2tupgrade](http://artc.com.au/n2tupgrade)

