

NARRABRI TO TURRAWAN LINE UPGRADE

September 2023

WHAT ARE WE DOING?

The Narrabri to Turrawan Line Upgrade (N2TLU) involves the upgrade of 35km of track between the Hunter Valley Coal Network and Inland Rail.

Works include the replacement of existing steel and timber sleepers with heavy duty concrete sleepers, replacement of the existing rail with upgraded rail, and earthworks.

OUT OF HOURS WORK IN THE RAIL CORRIDOR

We are planning to work outside standard construction hours within the existing rail corridor between Narrabri and Turrawan. Maps of the work areas are shown on page 3 and 4 of this notification (Map 1, 2 and 3).

Information about dates, locations and work activities is listed in the table below. Works will occur between **6am** and **6pm**, weather permitting.

LOCATION	DATES	WORK
Rail Corridor between Narrabri and Turrawan (Map 1)	<ul style="list-style-type: none"> Saturday 30 September to Monday 2 October 2023 Saturday 14 October to Sunday 15 October 2023 Saturday 28 October to Sunday 29 October 2023 	Track work including removing ballast (the rock layer underneath the tracks), replacing sleepers, and associated works required to complete the upgrade of the rail track
Rail corridor near Narrabri North (near Newell Highway) (Map 2)	<ul style="list-style-type: none"> Saturday 30 September to Sunday 1 October 2023 	Tamping
Near Kamilaroi Highway Overbridge (Map 3)	<ul style="list-style-type: none"> Saturday 14 October to Sunday 15 October 2023 	Track work including removing ballast, replacing sleepers, and associated works required to complete the upgrade of the rail track

EQUIPMENT

The equipment to be used will include excavators, dozers and graders, trucks, power hand tools, dozers and graders, scrapers, watercarts, vibratory rollers, semi-trailers, construction vehicles, earth moving machines and a tamper.

TRAFFIC CHANGES

If required, traffic control will be put in place to minimise any impacts to the community.

RAIL CORRIDOR WEEKDAY TRACK WORK

We have limited opportunities throughout the year when we can safely access the rail track and some work has to take place during pre-planned track closures. We are planning to work during and outside standard construction hours within the existing rail corridor, at various locations in the rail corridor between Narrabri and Narrabri Coal. Maps of the work areas are shown on page 4 of this notification (Maps 1 and 4).

Information about dates, locations and work activities is listed in the table below. Works will be continuous from **6am Wednesday to 6pm Friday**, weather permitting.

LOCATION	DATE	WORK
Rail Corridor between Narrabri and Turrawan (Map 1)	Wednesday 4 October to Friday 6 October	<ul style="list-style-type: none"> Earthworks, replacing ballast (the rock layer underneath the tracks), replacing sleepers, rerailing, and associated works required to complete the upgrade of the rail track
Greylands Road Level Crossing (Map 4)		<ul style="list-style-type: none"> Closure of Greylands Road Level Crossing Removal and replacement of existing steel level crossing plates

EQUIPMENT

The equipment to be used will include excavators, dozers and graders, trucks, power hand tools, dozers and graders, scrapers, watercarts, vibratory rollers, semi-trailers, construction vehicles, rail saws, welding equipment, traffic control signage and barriers, earth moving machines, lighting towers and a tamper.

TRAFFIC CHANGES

The Greylands Road Level Crossing will be closed for the duration of the works, for safety reasons. A detour will be in place for local residents via Greylands Road, Turrawan Rail Level Crossing and the Kamilaroi Highway. A map of the detour can be found on page 4 of this notification (Map 3).

HOW COULD THIS WORK AFFECT YOU?

This work may be noisy and disruptive, however every effort will be made to keep noisy works to a minimum and reduce impacts to the community wherever possible. Some of the measures we may use include turning off equipment when not in use and using non-tonal ('white noise') reversing alarms on vehicles.

WORK DURING STANDARD HOURS

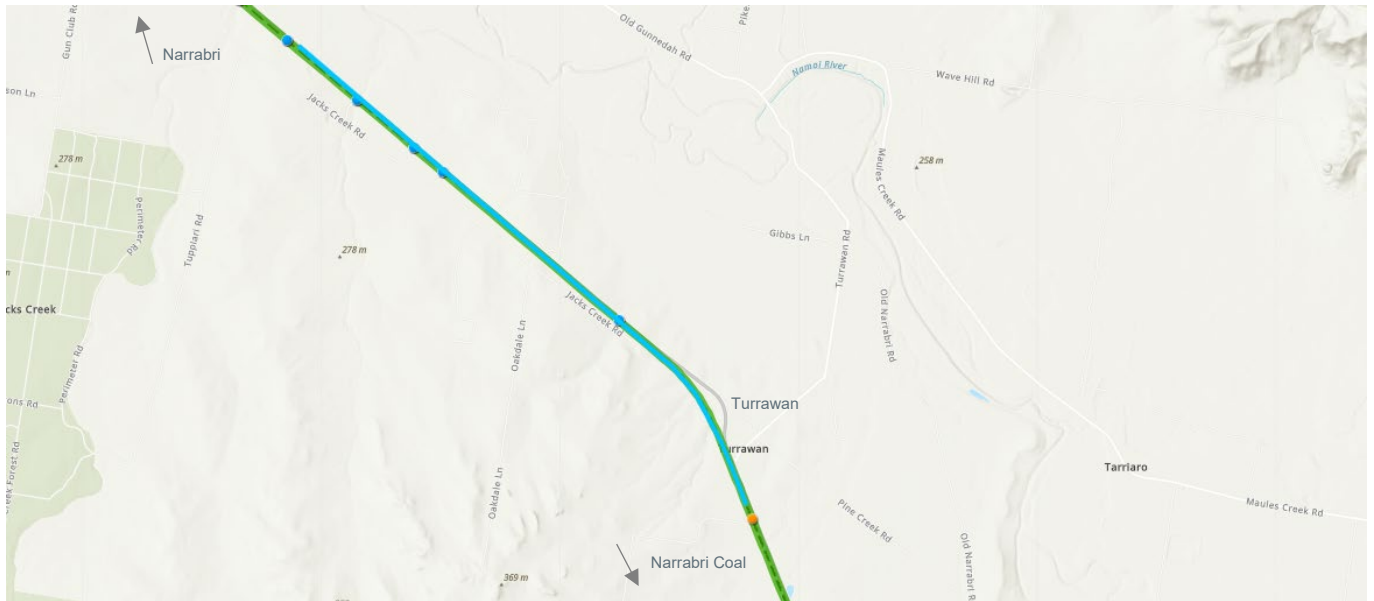
We are also working during standard construction hours from **Monday 17 April 2023** for approximately twelve months. Work hours are **7am to 6pm Monday to Friday** and **8am to 1pm Saturday**, weather permitting. Work activities will take place at various locations within and near the rail corridor at Narrabri and Turrawan and will include: delivery of materials, surveying, drainage works, resleepering and rerailing.

CONTACT US

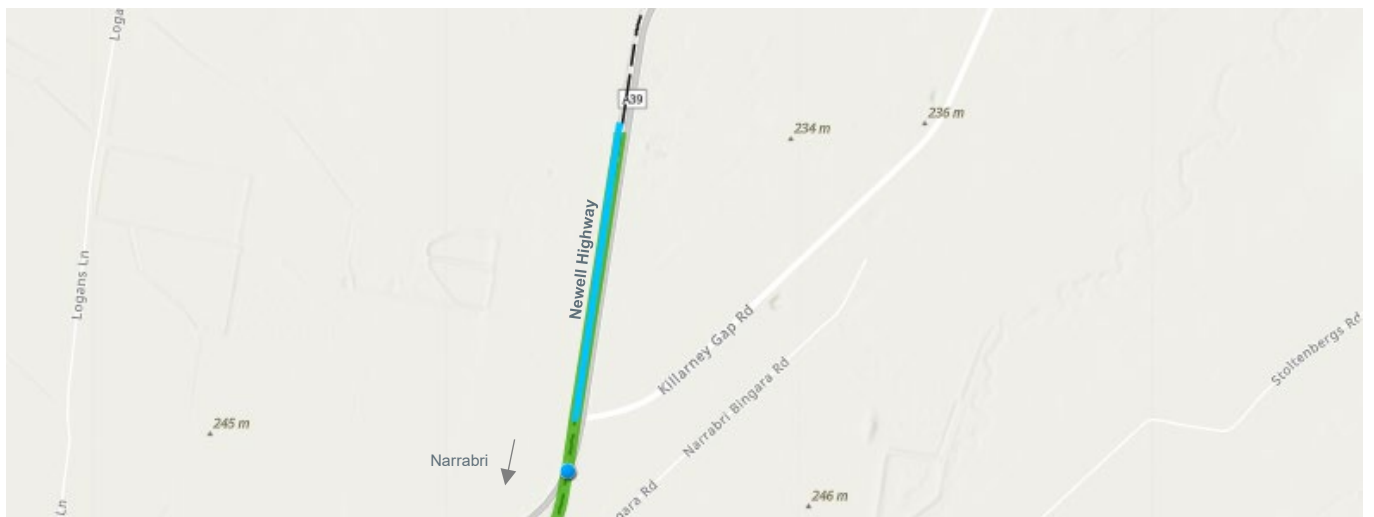
To provide feedback about these works, working times, durations or respite measures, please call our 24-hour Enviroline on 1300 550 402 (mention 'Narrabri to Turrawan') or by emailing nswprojects@artc.com.au. You can find out more information about the project and upcoming works by visiting our website artc.com.au/n2tupgrade.




WORK LOCATIONS

Map 1: Out of hours work in the rail corridor between Narrabri and Turrawan



Map 2: Out of hours work in the rail corridor near Narrabri North

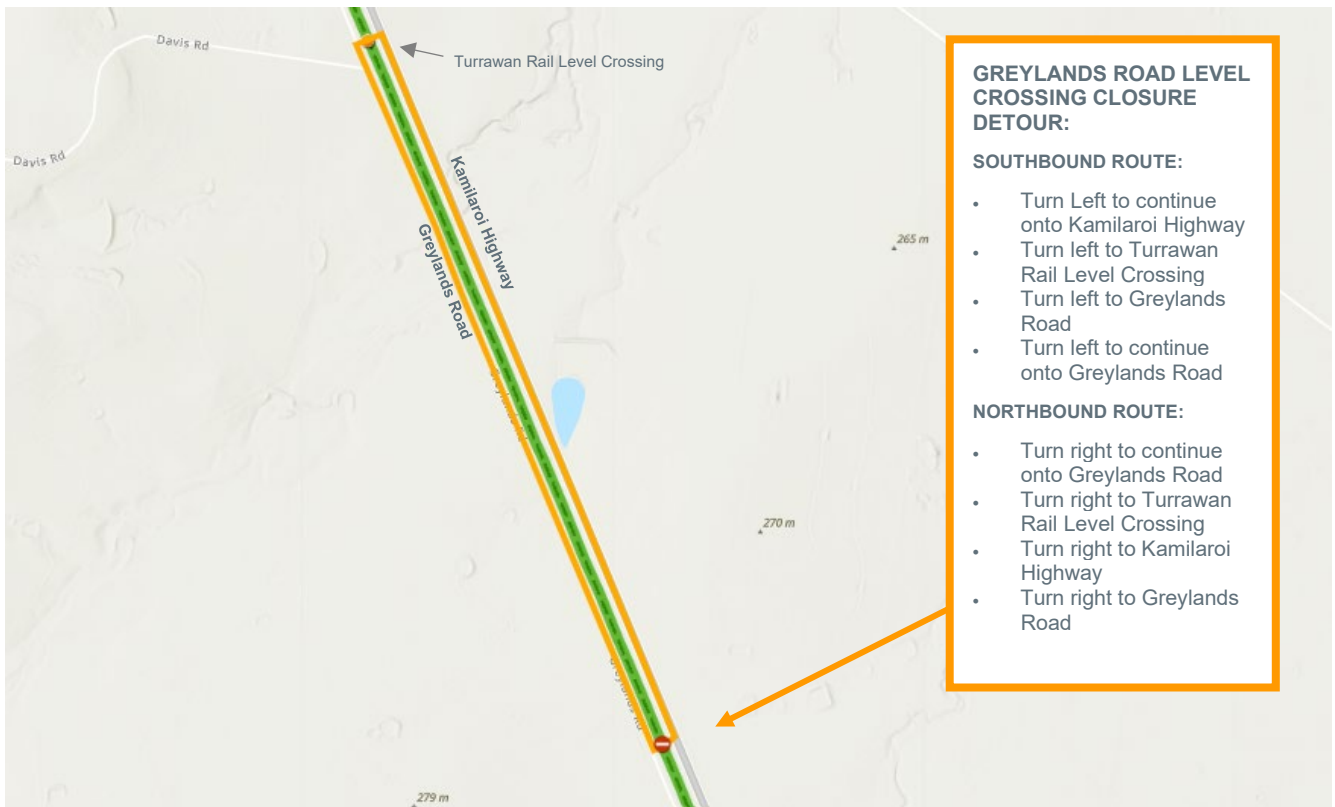


Track alignment:	
Work locations:	
Vehicle detour:	

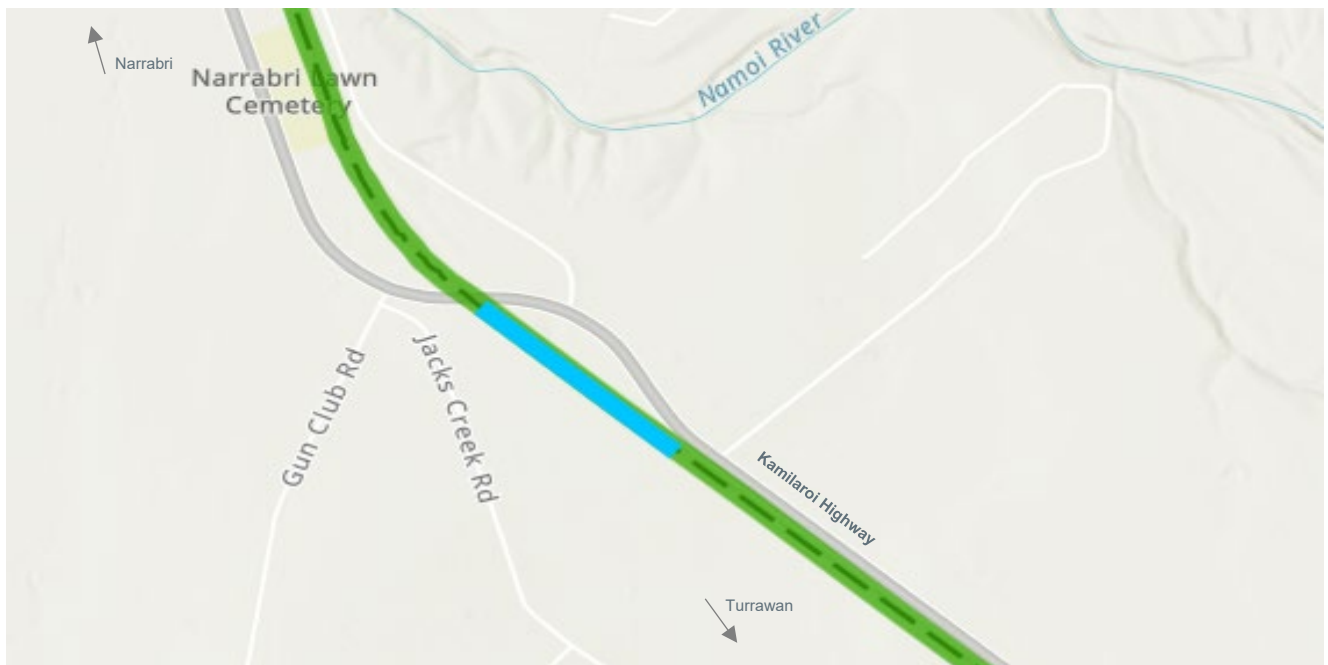


If you require the services of an interpreter, please contact the Translating and Interpreting Service on 131 450 and ask them to call the project team on 1300 550 402. The interpreter will then assist you with translation.

Map 3: Weekend track work in rail corridor near Greylands Road Level Crossing



Map 3: Out of hours work in rail corridor near Kamilaroi Highway, Narrabri



WANT TO KNOW MORE?



p: Enviroline 1300 550 402
e: nswprojects@artc.com.au
w: artc.com.au/n2tupgrade

