

NARRABRI TO TURRAWAN LINE UPGRADE

4 September 2023

WHAT ARE WE DOING?

The Narrabri to Turrawan Line Upgrade (N2TLU) involves the upgrade of 35km of track between the Hunter Valley Coal Network and Inland Rail.

The project will be delivered from Narrabri Coal Junction at Whitehaven Coal, south of Turrawan, to the future interface with Inland Rail at Narrabri North.

OUT OF HOURS WORK IN THE RAIL CORRIDOR

We are planning to work outside standard construction hours in the rail corridor near Kamilaroi Highway, Narrabri. A map of the work area is shown on page 2 of this notification (Map 1).

Information about dates, locations and work activities is listed in the table below. Works will occur between **6am** and **6pm**, weather permitting.

LOCATION	DATE	WORK
Near Kamilaroi Highway Overbridge	<ul style="list-style-type: none">Saturday 16 September to Sunday 17 September 2023	Track work including removing ballast (the rock layer underneath the tracks), replacing sleepers, and associated works required to complete the upgrade of the rail track

EQUIPMENT

The equipment to be used will include front end loaders, excavators, rollers, delivery trucks, semi-trailers, delivery floats, small motor tools and construction vehicles.

HOW COULD THIS WORK AFFECT YOU?

This work may be noisy and disruptive, however every effort will be made to keep noisy works to a minimum and reduce impacts to the community wherever possible. Some of the measures we may use include turning off equipment when not in use, setting up noise blankets around work sites and using non-tonal ('white noise') reversing alarms on vehicles.

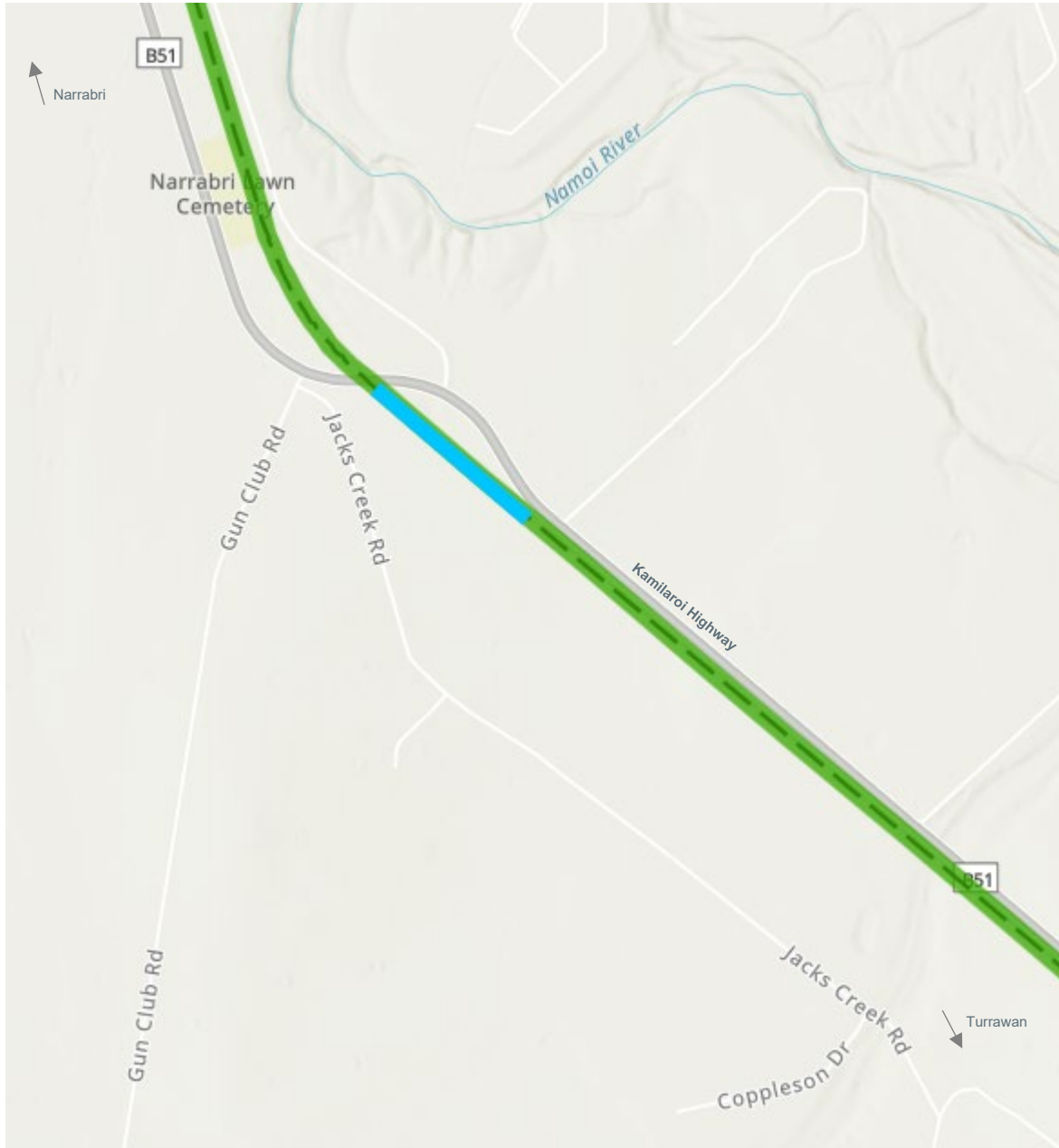
CONTACT US

To provide feedback about these works, working times, durations or respite measures, **please call our 24-hour Enviroline on 1300 550 402 (mention 'Narrabri to Turrawan')** or by emailing nswprojects@artc.com.au.

You can find out more information about the project and upcoming works by visiting our website artc.com.au/n2tupgrade.

WORK LOCATIONS

Map 1: Work location near Kamilaroi Highway, Narrabri



Track alignment:



Work locations:



If you require the services of an interpreter, please contact the Translating and Interpreting Service on 131 450 and ask them to call the project team on 1300 550 402. The interpreter will then assist you with translation.

WANT TO KNOW MORE?



p: Enviroline 1300 550 402
e: nswprojects@artc.com.au
w: artc.com.au/n2tupgrade

